

CABLES

CONNECTORS

TOOLS

VOICE

IP

AUDIO/VISUAL

SECURITY

YOUR TRUSTED SOURCE OF CONNECTIVITY



ABOUT US

TSOC is an established manufacturer of industry compliant Cables, Connectors & Tools designed for the professional installer.

Our products are specified by leading Telecom, and Cable service providers, Network Cabling, Security & Audio/Visual installers and Electrical contractors.

Our customer service department is proactive and responsive. Standard products are always in stock and special order materials are available with a quick turn-around.

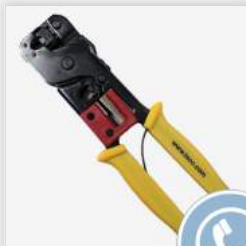


Choose TSOC as your connectivity partner and enjoy the benefits of quality, service and value.

INDEX OF CATEGORIES

VOICE

PAGES 3-12



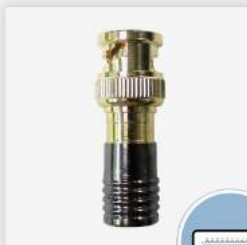
IP

PAGES 13-20



A/V

PAGES 21-28



BIX

PAGES 29-30



Ask about our **TSOC Point of Sale Display Kit!**



TOOLS



CABLE COMB

The TSOC #CC-250 Cable Comb is designed to organize Network Cabling during installation and provide a professional appearance.

Part #: **CC-250**

Colours: Yellow/ Blue Unit of Measure: EA



TELECOM MOD PLUG CRIMP TOOL

The CT-3346 is used to crimp all TSOC mod plugs, including: 4P4C (handset), 6P4C & 6P6C. It also has a built in wire cutter & stripper for flat telephone cable.

Part #: **CT-3346**

Colours: Black/Yellow Unit of Measure: EA



UNIVERSAL CABLE CRIMPING TOOL

The CT-200 universal cable crimping tool is used for 4P4C RJ22, 6P4C RJ11, 6P6C RJ12, 8P8C RJ45 and 10P10C.

Part #: **CT-200**

Colours: Black/Blue Unit of Measure: EA



DATACOM IMPACT TERMINATION TOOL

The PT-3140N heavy duty termination tool works with all standard 110 and 66 connectors/blocks, cuts and terminates wires.

Part #: **PT-3140N**

Colours: Blue/Grey Unit of Measure: EA



ENHANCED DATACOM PREP TOOL

Adjustable strip and cut tool for UTP and flat ribbon cable.

Part #: **MST-501B**

Colours: Grey Unit of Measure: EA



DATACOM PREP & TERMINATION TOOL

This convenient tool is designed to strip and terminate 110 type connectors and blocks in field installations.

Part #: **PT-110**

Colours: Ivory Unit of Measure: EA



TELECOM 66 TYPE TERMINATION TOOL

Impact termination tool for field installation of 66 type blocks in a central office environment.

Part #: **PTCO-66**

Colours: Ivory Unit of Measure: EA

PRODUCTS



MODULAR PLUGS

This modular plug accepts 24-26AWG stranded wire.

STANDARD

Part #: **MP-4P4C**

Colours: CLear

SOLID

Part #: **N/A**

Unit of Measure: 100/PKG



MODULAR PLUGS

This modular plug accepts 24-26AWG solid or stranded wire

STANDARD

Part #: **MP-6P2C**

Part #: **MP-6P4C**

Part #: **MP-6P6C**

Colours: CLear

SOLID

Part #: **N/A**

Part #: **MP-6P4CS**

Part #: **MP-6P6CS**

Unit of Measure: 100/PKG



MODULAR PLUGS

This modular plug accepts 24-26AWG solid or stranded wire

STANDARD

Part #: **MP-6P6CDEC**

Colours: CLear

SOLID

Part #: **MP-6P6CSDEC**

Unit of Measure: 100/PKG



MODULAR PLUGS

This modular plug accepts 24-26AWG solid or stranded wire

STANDARD

Part #: **MP-6P6CL**

Colours: CLear

SOLID

Part #: **MP-6P6CSL**

Unit of Measure: 100/PKG



MODULAR LINE CORD

Flat stranded line cord is FT1, 26AWG.

4 CONDUCTOR

Part #: **TGS-4CSV**

Part #: **TGS-4CBK**

Part #: **TGS-4CWH**



6 CONDUCTOR

Part #: **TGS-6CSV**

Part #: **TGS-6CBK**

Part #: **TGS-6CWH**



8 CONDUCTOR

Part #: **TGS-8CSV**

Part #: **TGS-8CBK**

Part #: **TGS-8CWH**



10 CONDUCTOR

Part #: **TGS-10CSV**

Part #: **TGS-10CBK**

Part #: **TGS-10CWH**

Colours: Silver Satin, White & Black

Unit of Measure: 1000FT/RL



TELECOM DISTRIBUTION BLOCK 110

This connecting block equipped with 110 type terminals will take 4 incoming pair and distribute to 12 locations.

Part #: **TMDB-T01BK**

Colours: Black

Unit of Measure: EA



TELECOM DISTRIBUTION BLOCK SCREW TERMINAL

This connecting block equipped with screw terminals will take 2 incoming pair and distribute to 5 locations.

Part #: **TM305-B4IV**

Colours: Ivory

Unit of Measure: EA



TELECOM DISTRIBUTION BLOCK 66 TYPE

This 6 Pair Connecting Block is designed with 66 Type terminals and will accept 2 incoming pairs and distribute to 5 locations.

Part #: **TM66B4-2C-1**

Colours: Black/Blue

Unit of Measure: EA



TELECOM DISTRIBUTION BLOCK 66 TYPE

This 50 Pair Connecting Block is designed with 66 Type terminals and will accept 2 incoming pairs and distribute to 49 locations.

Part #: **TM66B50**

Colours: Blue/Grey

Unit of Measure: EA



BRIDGING CLIP 66 TYPE

This Bridging Clip is designed for use with the TM66B50 and will duplicate the signal across any pair of 66 Type terminals.

Part #: **TM66B50 -BC**

Colours: N/A

Unit of Measure: EA



DIRECT BURIAL SPLICE

This weather proof engineer grade polymer splice kit will accept RG-59, RG-6, RG-11 or multiple pair 24AWG cable.

Part #: **TM-CSPL1**

Colours: Orange

Unit of Measure: EA



DRYWALL BRACKETS

This post-construction metal bracket allows installation of low voltage wall plates directly on drywall without using a junction box.

Part #: **TMWBF-1CD**

Colours: N/A

Unit of Measure: 10/PKG



DRYWALL BRACKETS

This pre-construction metal bracket allows installation of low voltage wall plates directly behind drywall by attaching to wall stud.

Part #: **TMWBF-2CD**

Colours: N/A

Unit of Measure: EA



SMOOTH FLUSH MOUNT JACK - SINGLE

This is a one piece smooth finish single 4 or 6 conductor screw terminals flush mount wall plate.

Part #: **TM602-4SIV**

Part #: **TM602-6SIV**

Colours: Ivory & White

Part #: **TM602-4SWH**

Part #: **TM602-6SWH**

Unit of Measure: EA



DECORA FLUSH MOUNT JACK - SINGLE

This is a one piece Decora finish single 4 or 6 conductor screw terminals flush mount wall plate.

Part #: **TM602-4DIV**

Part #: **TM602-6DIV**

Colours: Ivory & White

Part #: **TM602-4DWH**

Part #: **TM602-6DWH**

Unit of Measure: EA



SMOOTH FLUSH MOUNT JACK - DUPLEX

This is a one piece smooth finish duplex 4 or 6 conductor screw terminal flush mount wall plate.

Part #: **TM602-44SIV**

Part #: **TM602-66SIV**

Colours: Ivory & White

Part #: **TM602-44SWH**

Part #: **TM602-66SWH**

Unit of Measure: EA



DECORA FLUSH MOUNT JACK - DUPLEX

This is a one piece Decora finish duplex 4 or 6 conductor screw terminal flush mount wall plate.

Part #: **TM602-44DIV**

Part #: **TM602-66DIV**

Colours: Ivory & White

Part #: **TM602-44DWH**

Part #: **TM602-66DWH**

Unit of Measure: EA



FLUSH MOUNT JACK WITH DOOR

This is a two piece 4 or 6 conductor screw terminal surface mount wall jack with sliding dust proof door.

Part #: **TM602-4NTIV**

Part #: **TM602-6NTIV**

Colours: Ivory & White

Part #: **TM602-4NTWH**

Part #: **TM602-6NTWH**

Unit of Measure: EA



WALL MOUNT JACK

This is a two piece 4 or 6 conductor screw terminal surface mount wall jack with a plastic cover.

Part #: **TM603-4IV**

Part #: **TM603-6IV**

Colours: Ivory & White

Part #: **TM603-4WH**

Part #: **TM603-6WH**

Unit of Measure: EA

PRODUCTS



UNIVERSAL JACK ASSEMBLY

This is a two piece 4 or 6 conductor screw terminal surface mount wall jack with a metal cover.

Part #: **TM630AC-4M** Part #: **TM630AC-6M**
Colours: Stainless Steel Unit of Measure: EA



UNIVERSAL JACK ASSEMBLY

This is a two piece 4 or 6 conductor screw terminal surface mount wall jack with a plastic cover

Part #: **TM630AC-4IV** Part #: **TM630AC-6IV**
Part #: **TM630AC-4WH** Part #: **TM630AC-6WH**
Colours: Ivory & White Unit of Measure: EA



CONNECTING BLOCK

This 1 piece hinged connecting block is available in 4, 6, 8 conductor screw terminals for station wiring.

Part #: **TM41B4IV** Part #: **TM41B4WH**
Part #: **TM41B6IV** Part #: **TM41B6WH**
Part #: **TM41B8IV** Part #: **TM41B8WH**
Colours: Ivory & White Unit of Measure: EA



SURFACE JACK - SINGLE

This two piece 4 or 6 conductor screw terminal surface mount jack with a removable cover.

Part #: **TM605-4TIV** Part #: **TM605-4TWH**
Part #: **TM605-6TIV** Part #: **TM605-6TWH**
Colours: Ivory & White Unit of Measure: EA
* Adhesive Tape Included



SURFACE JACK WITH DOOR - SINGLE

This is a two piece 4 or 6 conductor screw terminal surface mount jack with sliding dust proof door.

Part #: **TM605-4NTIV** Part #: **TM605-4NTWH**
Part #: **TM605-6NTIV** Part #: **TM605-6NTWH**
Colours: Ivory & White Unit of Measure: EA
* Adhesive Tape Included



SURFACE JACK - DUPLEX

This is a two piece 6 conductor screw terminal surface mount jack with removable cover.

Part #: **TM615-66DVIV** Part #: **TM615-66DVWH**
Colours: Ivory & White Unit of Measure: EA
* Adhesive Tape Included



MINI SURFACE JACK - DUPLEX

This is a two piece 4 conductor screw terminal surface mount jack with removable cover.

Part #: **TM615-44IV** Part #: **TM615-44WH**
Colours: Ivory & White Unit of Measure: EA
* Adhesive Tape Included



SURFACE JACK ASSEMBLY- SINGLE

This is a two piece 8 conductor USOC RJ45 screw terminal surface mount jack with removable cover configurations.

Part #: **TM605-8ATIV** Unit of Measure: EA
Colours: Ivory
* Adhesive Tape Included



SURFACE JACK ASSEMBLY- SINGLE

This is a two piece 8 conductor USOC RJ31X screw terminal surface mount jack with removable cover.

Part #: **TM605-8ASTIV** Unit of Measure: EA
Colours: Ivory
* Adhesive Tape Included



IN-LINE COUPLER

This coupler joins any two modular plug ended cables.

CROSS WIRING	STRAIGHT THROUGH WIRING
Part #: TM608-4HIV	N/A 4P4C
Part #: TM608-4IV	N/A 6P4C
Part #: TM608-6IV	TM608-6SIV 6P6C
Part #: TM608-8IV	TM608-8SIV 8P8C
Part #: N/A	TM608-10SIV 10P10C
Colours: Ivory	Unit of Measure: EA



T-ADAPTER - 1M TO 4F

This adapter allows users to take advantage of installed 4-pair to gain access to individual pairs or bridge multiple jacks.

Part #: **TM6094-8PT01BK**
Part #: **TM6094-8PT01BK2**
Colours: Black Unit of Measure: EA



T-ADAPTER - 1M TO 2F

All units have 2 female jacks mating to a male plug. Useful in daisy chain wiring, parallel phones or answering machines.

Part #: TM609-4L2IV	6P4C	Splits Line Into L1 & L2
Part #: TM609-4IV	2 x 6P4C	
Part #: TM609-6IV	2 x 6P6C	
Part #: TM609-8IV	2 x 8P8C	
Part #: TM609-4/8SIV	6P4C x RJ-31X	
Part #: TM609-6/4IV	6P6C x 6P6C With Loop	
Colours: Ivory	Unit of Measure: EA	



DUPLEX CORD COUPLER - 1F TO 2F

All units have 3 female jacks. Useful in daisy chain wiring, parallel phones or answering machines.

Part #: **TM610-4L2IV** 6P4C Splits Line Into L1 & L2
 Part #: **TM610-4IV** 2 x 6P4C
 Part #: **TM610-6IV** 2 x 6P6C
 Colours: Ivory Unit of Measure: EA



5 WAY MODULAR ADAPTER

This modular adapter is equipped with a 6FT cord and will distribute 2 pair to 5 locations.

Part #: **TM6095-4PT06IV**
 Colours: Ivory Unit of Measure: EA



HARMONICA

This adapter equipped with a Velcro strap converts a 25 pair trunk cable into six 8P8C modular jacks.

Part #: **HAR-0688FGY** (FEMALE)
 Part #: **HAR-0688MGY** (MALE)
 Colours: Black/Blue Unit of Measure: EA



HARMONICA

This adapter equipped with a Velcro strap converts a 25 pair trunk cable into eight 6P6C modular jacks.

Part #: **HAR-0888FGY** (FEMALE)
 Part #: **HAR-0888MGY** (MALE)
 Colours: Black/Blue Unit of Measure: EA



HARMONICA

This adapter equipped with a Velcro strap converts a 25 pair trunk cable into twelve 6P4C or 8P4C modular jacks.

Part #: **HAR-1264FGY** (FEMALE)
 Part #: **HAR-1284SFGY** (FEMALE)
 Part #: **HAR-1264MGY** (MALE)
 Part #: **HAR-1284SMGY** (MALE)
 Colours: Grey Unit of Measure: EA



1 PORT KEYSTONE SURFACE BOX

This surface mount box will accept all TM313 & TM314 series TSOC keystone modules.

Part #: **TM605-K1IV2** Part #: **TM605-K1WH2**
 Colours: Ivory & White Unit of Measure: EA



2 PORT KEYSTONE SURFACE BOX

This surface mount box will accept all TM313 & TM314 series TSOC keystone modules.

Part #: **TM605-K2IV2** Part #: **TM605-K2WH2**
 Colours: Ivory & White Unit of Measure: EA



SURFACE MOUNT SPACER

Used to mount all types of wall plates when additional box space is required.

Part #: **TM221IV** Part #: **TM221WH**
 Colours: Ivory & White Unit of Measure: EA



SURFACE MOUNT BOX

Used to mount all types of wall plates when additional box space is required.

Part #: **TM625MBIV** (1")
 Part #: **TM625MBWH** (1")
 Part #: **TM625MBWH2** (1.85")
 Colours: Ivory & White Unit of Measure: EA



SURFACE MOUNTING SPACER

This spacer is used to provide additional space for the TM630AC series universal wall jack.

Part #: **TM630SPWH** Part #: **TM630SPIV**
 Colours: White & Ivory Unit of Measure: EA



KEYSTONE SURFACE BOX

This surface mount box will accept any TSOC keystone bezel and module.

Part #: **TM605-K2BWH**
 Part #: **TM605-K2BIV**
 Colours: White & Ivory Unit of Measure: EA



KEYSTONE SURFACE BOX

This surface mount box will accept any combination TSOC keystone bezel and module.

Part #: **TM605-K4BWH**
 Part #: **TM605-K4BIV**
 Colours: White & Ivory Unit of Measure: EA



KEYSTONE SURFACE BOX

This surface mount box will accept any combination TSOC keystone bezel and module.

Part #: **TM605-K6BWH**
 Part #: **TM605-K6BIV**
 Colours: White & Ivory Unit of Measure: EA



KEYSTONE BEZEL

This bezel accepts all TSOC keystone modules for any combination. Available in 1 and 2 bezel and blank when no keystones are required.

Part #: **TM314-BZ1WH** Part #: **TM314-BZ1IV**
 Part #: **TM314-BZ2WH** Part #: **TM314-BZ2IV**
 Part #: **TM314-BZBWH** Part #: **TM314-BZBIV**
 Colours: White & Ivory Unit of Measure: EA



Voice Networking Solutions

PRODUCTS



DESIGNER KEYSTONE SURFACE BOX

This surface mount box is designed to accept the TM314 series of voice/data keystone modules only.

Part #: **TM605-K12DIV** Part #: **TM605-K12DWH**

Colours: Ivory & White

Unit of Measure: EA



BLANK KEYSTONE MODULE

This keystone module is used to fill unused ports in any TSOC keystone outlet.

Part #: **TM314-BLNWH-EA**

Colours: White

Unit of Measure: EA



RCA-F KEYSTONE MODULE

This unique keystone module converts an F signal to RCA for home theatre applications.

Part #: **TM314-FRCBL-WH**

Part #: **TM314-FRCGN-WH**

Part #: **TM314-FRCRD-WH**

Part #: **TM314-FRCWH-WH**

Part #: **TM314-FRCYL-WH**

Colours: White

Unit of Measure: EA

Insert Colours: Blue, Green, Red, White, Yellow



AUDIO KEYSTONE MODULE

This binding post module is designed to accept 14-26AWG speaker cable and will fit any TSOC keystone outlet.

Part #: **TM314-BPBK-IV**

Part #: **TM314-BPRD-IV**

Part #: **TM314-BPBK-WH**

Part #: **TM314-BPRD-WH**

Colours: Ivory & White

Unit of Measure: EA

Insert Colours: Black & Red



VIDEO KEYSTONE MODULE

This video module is designed to accept any RG59 or RG6 cable assembly with F connectors and will fit any TSOC keystone outlet.

Part #: **TM314-FIV**

Colours: Ivory & White

Part #: **TM314-FWH**

Unit of Measure: EA

RCA FEED-THROUGH KEYSTONE MODULE

This video module is designed to accept any cable assembly with RCA connectors and will fit any keystone outlet.

Part #: **TM314-RCRD-IVF**

Part #: **TM314-RCYL-IVF**

Part #: **TM314-RCWH-IVF**

Part #: **TM314-RCRD-WHF**

Part #: **TM314-RCYL-WHF**

Part #: **TM314-RCWH-WHF**

Colours: Ivory & White

Unit of Measure: EA

Insert Colours: Red, Yellow & White



SVHS FEED-THROUGH KEYSTONE MODULE

This video module is designed to accept any cable assembly with 4 Pin Mini Din connectors and will fit any TSOC keystone outlet.

Part #: **TM314-MDIV**

Colours: Ivory & White

Part #: **TM314-MDWH**

Unit of Measure: EA



CAT 3 RJ12 KEYSTONE MODULE (TOOL-LESS)

This 3 pair VOICE module requires no tool for termination and will fit any TSOC keystone outlet.

Part #: **TM313-6C3IV**

Part #: **TM313-6C3WH**

Part #: **TM313-6C3BK**

Colours: Ivory, White & Black

Unit of Measure: EA



CAT 3 RJ12 KEYSTONE MODULE (110)

This 3 pair VOICE module requires a 110 punch down tool for termination and will fit any TSOC keystone outlet.

Part #: **TM314-6C3BIV**

Part #: **TM314-6C3WH**

Part #: **TM314-6C3BK**

Colours: Ivory, White & Black

Unit of Measure: EA



12 PORT WALL MOUNTABLE PANEL

This handy wall mountable single hinged panel accepts all TSOC keystone modules for any combination.

Part #: **TMPP-HD12BG**

Colours: Beige

Unit of Measure: EA



24 PORT WALL MOUNTABLE PANEL

This handy wall mountable double hinged panel accepts all TSOC keystone modules for any combination.

Part #: **TMPP-HD24BG**

Colours: Beige

Unit of Measure: EA



BLANK KEYSTONE RACK MOUNT PANEL

This 19" rack mount panel accepts all TSOC keystone modules for any combination.

Part #: **TMPP-12BK** (1U)

Part #: **TMPP-16BK** (1U)

Part #: **TMPP-24BK** (2U)

Part #: **TMPP-32BK** (2U)

Part #: **TMPP-42BK** (3U)

Part #: **TMPP-16HDBK** (1U)

Part #: **TMPP-24HDBK** (1U)

Part #: **TMPP-32HDBK** (2U)

Colours: Beige

Unit of Measure: EA



HINGED WALL MOUNT BRACKETS

This hinged wall mount bracket holds all standard 19" patch panels.

FIXED

Part #: **TMWB-02BK**
Part #: **TMWB-04BK**
Part #: **TMWB-04DBK**

Colours: Black

ADJUSTABLE

Part #: **TMWB-01BKA**
Part #: **TMWB-02BKA**
Part #: **TMWB-04BKA**
Part #: **TMWB-08BKA**

Unit of Measure: EA



SMOOTH KEYSTONE PLATE

This is single gang plastic wall plate smooth finish will accept any TSOC keystone module.

1 PORT

Part #: **TM602-K1SIV** Part #: **TM602-K1SWH**

2 PORT

Part #: **TM602-K2SIV** Part #: **TM602-K2SWH**

3 PORT

Part #: **TM602-K3SIV** Part #: **TM602-K3SWH**

4 PORT

Part #: **TM602-K4SIV** Part #: **TM602-K4SWH**

6 PORT

Part #: **TM602-K6SIV** Part #: **TM602-K6SWH**

8 PORT

Part #: **TM602-K8SIV** Part #: **TM602-K8SWH**

12 PORT

Part #: **TM602-K12SIV** Part #: **TM602-K12SWH**

Colours: Ivory & White

Unit of Measure: EA



DESIGNER KEYSTONE PLATE

This is single gang plastic wall plate designer finish will accept any TSOC keystone module. Includes a protective lens over the screws.

1 PORT

Part #: **TM602-K1DIV** Part #: **TM602-K1DWH**

2 PORT

Part #: **TM602-K2DIV** Part #: **TM602-K2DWH**

3 PORT

Part #: **TM602-K3DIV** Part #: **TM602-K3DWH**

4 PORT

Part #: **TM602-K4DIV** Part #: **TM602-K4DWH**

6 PORT

Part #: **TM602-K6DIV** Part #: **TM602-K6DWH**

8 PORT

Part #: **TM602-K8DIV** Part #: **TM602-K8DWH**

12 PORT

Part #: **TM602-K12DIV** Part #: **TM602-K12DWH**

Colours: Ivory & White

Unit of Measure: EA



SINGLE GANG COVER PLATE

Single gang cover plate designed for the Decora strap.

Part #: **TM602-SLIV**

Part #: **TM602-SLWH**

Colours: Ivory & White

Unit of Measure: EA



DUAL GANG COVER PLATE

Dual gang cover plate designed for the Decora strap.

Part #: **TM602-DLIV**

Part #: **TM602-DLWH**

Colours: Ivory & White

Unit of Measure: EA



DECORA STRAP

This Decora strap accepts all TSOC keystone modules for any combination.

1 PORT

Part #: **TM602-K1LIV** Part #: **TM602-K1LWH**

2 PORT

Part #: **TM602-K2LIV** Part #: **TM602-K2LWH**

3 PORT

Part #: **TM602-K3LIV** Part #: **TM602-K3LWH**

4 PORT

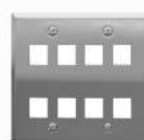
Part #: **TM602-K4LIV** Part #: **TM602-K4LWH**

6 PORT

Part #: **TM602-K6LIV** Part #: **TM602-K6LWH**

Colours: Ivory & White

Unit of Measure: EA



STEEL KEYSTONE WALL PLATE

This single gang stainless steel wall plate accepts all TSOC keystone modules.

1 PORT

Part #: **TM602-K1M**

2 PORT

Part #: **TM602-K2M**

3 PORT

Part #: **TM602-K3M**

4 PORT

Part #: **TM602-K4M**

8 PORT

Part #: **TM602-K8M**

Colours: Stainless Steel

Unit of Measure: EA



1 PORT WALL PHONE KEYSTONE PLATE

This single gang plastic wall plate will accept all TSOC keystone modules to mount any analogue, digital or VOIP telephone.

Part #: **TM630-K1SWHHK**

Part #: **TM630-K1SIVHK**

Colours: White & Ivory

Unit of Measure: EA



Voice Networking Solutions

PRODUCTS



SINGLE SURFACE WEATHERPROOF OUTLET

This composite metal surface outlet is designed to accept any one keystone RJ11 module for installation in an outdoor environment.

Part #: **TM605ODM-4GY**

Colours: Grey

Unit of Measure: EA



MODULAR LINE CORDS

This is a flat line cord terminated with a modular plug on both ends.

2 CONDUCTOR

Part #: **ML2-01MMSV** (1FT) **ML2-07MMSV** (7FT)

Part #: **ML2-02MMSV** (2FT) **ML2-15MMSV** (15FT)

Part #: **ML2-03MMSV** (3FT) **ML2-25MMSV** (25FT)

4 CONDUCTOR

Part #: **ML4-01MMSV** (1FT) **ML4-07MMSV** (7FT)

Part #: **ML4-02MMSV** (2FT) **ML4-15MMSV** (15FT)

Part #: **ML4-03MMSV** (3FT) **ML4-25MMSV** (25FT)

6 CONDUCTOR

Part #: **ML6-07MMSV** (7FT)

Part #: **ML6-15MMSV** (15FT)

Part #: **ML6-25MMSV** (25FT)

8 CONDUCTOR

Part #: **ML8-07MMSV** (7FT)

Part #: **ML8-15MMSV** (15FT)

Part #: **ML8-25MMSV** (25FT)

Colours: Silver Satin

Unit of Measure: EA



SINGLE FLUSH WEATHERPROOF OUTLET

This plastic flush outlet is designed with one RJ11 connector with a lockable door for installation in an outdoor environment.

Part #: **TM602ODP-4GY** (LOCKABLE)

Part #: **TM602ODM-4SV**

Colours: Grey

Unit of Measure: EA



CORD KITS

This combination cord kit is equipped with a standard 9FT coil cord (4C) + 7FT line cord (2C) with modular connectors. For use with any Analogue, Digital or VOIP telephone.

Part #: **CORDKIT-****

Colours: (See Chart)

Unit of Measure: EA



LINE CORDS - MOD/SPADE

This flat 4 conductor line cord is equipped with a modular plug and spade tips for hard wiring. Enquire about custom lengths.

4 CONDUCTOR

Part #: **ML4-01MSSV** (1FT)

Part #: **ML4-02MSSV** (2FT)

Part #: **ML4-07MSSV** (7FT)

Part #: **ML4-15MSSV** (15FT)

Part #: **ML4-25MSSV** (25FT)

6 CONDUCTOR

Part #: **ML6-07MSSV** (7FT)

Part #: **ML6-15MSSV** (15FT)

Part #: **ML6-25MSSV** (25FT)

8 CONDUCTOR

Part #: **ML8-02MSSV** (2FT)

Part #: **ML8-07MSSV** (7FT)

Colours: Silver Satin

Unit of Measure: EA



COIL CORDS

This flat coiled cord with RJ22 modular connectors is designed for use with any Analogue, PBX or VOIP Telephone Handset.

Part #: **MC4-09MM**** (9FT)

Part #: **MC4-15MM**** (15FT)

Part #: **MC4-25MM**** (25FT)

Colours: (See Chart)

Unit of Measure: EA



COIL CORDS

This round coil cord with spaded tips is designed for use with any vintage 2500 & 3500 type telephones.

Part #: **MCR4-07SS**** (7FT)

Part #: **MCR4-15SS**** (15FT)

Part #: **MCR4-25SS**** (25FT)

Colours: (See Chart)

Unit of Measure: EA

HANDSET CORD REFERENCE CHART

01 DOLPHIN GREY
02 ALMOND
03 BRIGHT WHITE
04 BEIGE
05 WARM WHITE
06 BANDAGE PINK

07 ASH
08 IVORY
09 BLACK
10 COCO BROWN
11A DEEP RED
12 CHARCOAL

13 HARMONY BLUE
14 PLATINUM GREY
15 DARK GREY
16 CHAMELEON GREY
17 MATTE BLACK
18 ETHER GREY



EXTENSION CORDS - SINGLE

This flat extension cord is equipped with a single modular female jack and male plug.

4 CONDUCTOR
Part #: **EC4-15MFSV** (15FT) **EC4-25MFSV** (25FT)
6 CONDUCTOR
Part #: **EC6-15MFSV** (15FT) **EC6-25MFSV** (25FT)
8 CONDUCTOR
Part #: **EC8-15MFSV** (15FT) **EC8-25MFSV** (25FT)
Colours: Silver Satin Unit of Measure: EA



EXTENSION CORDS - DUPLEX

This flat extension cord is equipped with a duplex modular female jack and male plug.

4 CONDUCTOR
Part #: **EC4-15M2FSV** (15FT) **EC4-25M2FSV** (25FT)
6 CONDUCTOR
Part #: **EC6-15M2FSV** (15FT) **EC6-25M2FSV** (25FT)
8 CONDUCTOR
Part #: **EC8-15M2FSV** (15FT) **EC8-25M2FSV** (25FT)
Colours: Silver Satin Unit of Measure: EA



25 PAIR MODULAR ADAPTER

This cabling adapter connects existing 25-pair cabling to a 4, 6 or 8 position modular female jack.

Part #: **TM153-AM04GY** (MALE)
Part #: **TM153-AM06GY** (MALE)
Part #: **TM153-AM08GY** (MALE)
Colours: Grey Unit of Measure: EA



VELCRO STRAP

This unique Velcro strap is used to secure either Metal or Plastic Telco connectors to frames or panels.

Part #: **TMVS-M1BK**
Colours: Black Unit of Measure: EA



25 PAIR CONNECTORIZED CABLES

This 25 pair CAT 3 cable assembly is terminated with an optional RJ71 Male or Female Telco connector on each end.

Part #: **AAP-15-FF** (15FT) AAP-15-MM
Part #: **AAP-30-FF** (30FT) AAP-30-MM
Colours: Grey Unit of Measure: EA
Custom lengths & configurations available



METAL TELCO CONNECTOR (IDC TYPE)

This Metal 50 pin RJ71 Male or Female Telco connector is complete with hood and hardware.

Part #: **TM-25FM** (FEMALE)
Part #: **TM-25MM** (MALE)
Colours: Stainless Steel Unit of Measure: EA



PLASTIC TELCO CONNECTOR (IDC TYPE)

This Plastic 50 pin RJ71 Male or Female Telco connector is complete with hood and hardware.

Part #: **TM-25FPBK** (FEMALE)
Part #: **TM-25MPBK** (MALE)
Colours: Black Unit of Measure: EA



PLASTIC HOOD (180°)

This 180° hood is compatible with the TM25FPBK and TM25MPBK Telco Connector.

Part #: **TM-25PH180BK**
Colours: Black Unit of Measure: EA



INLINE DSL LINE FILTER

This inline filter connects between the wall jack and device.

Part #: **TM608-DSL31XW** (RJ31X)
Part #: **TM608-DSLIV** (RJ11)
Colours: Ivory Unit of Measure: EA



DSL LINE FILTER (RJ11)

This inline filter connect between the wall and splits the signal between two devices. One port is filtered and one port is unfiltered.

Part #: **TM609-4DSL1IV**
Part #: **TM609-4DSL2IV**
Colours: Ivory Unit of Measure: EA



DSL POTS SPLITTER

This DSL POTS splitter is designed for indoor installation and splits Voice/Data signals on the Telephone Line and provides separate outputs.

Part # **80-410V-11** (RJ11)
Part# **80-410V-45** (RJ45)
Colours: Grey Unit of Measure: EA



Voice Networking Solutions

PRODUCTS



WALL MOUNT DSL LINE FILTER (RJ11)

This wall mount jack allows for installation of a telephone and provides 2 filtered and 1 unfiltered outlets.

Part #: **TM630-DSLIV2**

Colours: Ivory

Unit of Measure: EA



MODULAR PLUG LOCK

This Modular Plug Lock is designed to prevent tampering or disconnection of any Telephone Handset (RJ11) or Headset (RJ22) connection.

Part #: **ML-RJ11LK** (RJ11, HANDSET)

Part #: **ML-RJ22LK** (RJ22, HEADSET)

Colours: Clear

Unit of Measure: 10/PKG



BASIC STATION PROTECTOR

This one pair station protector is designed for outdoor applications and provides protection from Lightning and Power Surges.

Part #: **326-1L**

Colours: Grey

Unit of Measure: EA



DSL STATION PROTECTOR W/ DEMARCATION JACK

This DSL compliant station protector is equipped with an RJ11 connector and provides protection from Lightning and Power Surges.

Part #: **356-1I-00**

Colours: Grey

Unit of Measure: EA



CROSS CONNECT BLOCK

This 10 Pair Cross connect block allows for splice of 10 single pairs.

Part #: **65E-10**

Colours: Grey

Unit of Measure: EA



DISTRIBUTION BLOCK

This wire distribution block is equipped with test points and designed to multiply telephone wiring pairs in parallel.

Part #: **69T1** (1 IN – 5 OUT)

Part #: **69T2** (2 IN – 4 OUT)

Part #: **68T-1** (1 IN – 11 OUT)

Part #: **68T-2** (2 IN – 10 OUT)

Colours: Grey

Unit of Measure: EA



LARGE ENCLOSURE

This weatherproof enclosure is designed to accommodate the 68T1 and 68T2 wire distribution blocks.

Part #: **169-0**

Colours: Grey

Unit of Measure: EA

HOW TO:

TERMINATE A TOOL-LESS KEYSTONE MODULE



TOOL-LESS
TM313-8C5EBL

MATERIALS REQUIRED:

- | | |
|-------------------------|------------------------------------|
| (1) MST-501 | Adjustable Cut & Strip Tool |
| (2) TM313-8C5EBL | Tool-Less Keystone RJ-45 Module |
| (1) FT4-4PC5EBL | Solid 24AWG Wire UTP 4 Pair Cat 5E |
| (1) TP350 | Wire Map Tester |

INSTRUCTIONS:

Step 1:

Cut the specified length of UTP wire required using the cut blades equipped with the Adjustable Strip Tool.

Step 2:

Strip away 3" of the jacket using the strip blades equipped with the Adjustable Strip Tool exposing the insulated UTP conductors using the RIP cord strip and additional 3" of jacket.

Step 3:

Use your thumb and index finger to straighten each pair placing them in the desired wiring configuration. Place a pencil between each pair to help untwist the pairs.

Step 4:

Hold the cable firmly using your thumb and index finger at the base of the cable. Cut the insulated conductors at a 90 degree angle 3/4" from the edge of the jacket using the Adjusting Cut & Strip Tool.

Step 5:

Remove the locking clip and open the hinged door of the Tool-Less Keystone RJ-45 Module. Carefully insert 1 pair at a time into the cavity on a 45 degree angle until the tip of the wires reach the IDC contacts inside the connector. Close the hinged door to terminate each pair.

Step 6:

Repeat Step 5 one pair at a time from left to right until all 4 pairs are terminated and then replace the locking clip.

Step 7:

Verify the terminated cable assembly by inserting a test patch cord into both ends of the cable assembly and the other ends into the Tester and Remote unit of the Tester.

Step 8:

Insert Module into designated work station wall plate, surface box or patch panel plate.

Step 9:

Document the results and label the cable with a Inventory Number and Production Code for future reference.

FEATURED PRODUCTS



EZ TEMPLATE

The TSOC EZ-Template is a convenient and cost effective tool that provides a consistent cut out for Single Gang Wall Plates. The TSOC EZ-Template is equipped with a bubble level to ensure a consistent horizontal plane and a pencil for tracing.

Part #: **TM-EZTMP01BK**

Colours: Black

Unit of Measure: EA



EZ TEMPLATE II

The TSOC EZ-Template is a convenient and cost effective tool that provides a consistent cut out for Dual Gang Wall Plates. The TSOC EZ-Template is equipped with a bubble level to ensure a consistent horizontal plane.

Part #: **TM-EZTMP02BK**

Colours: Black

Unit of Measure: EA

MATERIALS REQUIRED:

- (1) **TM-EZTMP0xBK**
- (1) **TMWBF-1CD**
- (1) **Pencil**
- (1) **Drywall Saw**
- (1) **Manual or Power Screwdriver**

INSTALLATION:

Step 1:

Place the EZ-TEMPLATE on the DRYWALL in the desired location for the single gang low voltage wall plate to be installed. Adjust to required height (18-24 inches above the finished floor).

Keep the bubble in the centre to ensure the hole is level.

Use a PENCIL to trace the inside dimensions of the hole to be cut.

Step 2:

Place the DRYWALL saw tip along any section of the traced pencil line.

Hold firmly in one hand and with the other hand firmly press against the handle of the tool forcing the blade to penetrate the drywall.

Continue sawing along the lines until the inside drywall has been cut away.

Step 3:

Place the LOW VOLTAGE mounting bracket against the opening in the drywall.

Bend each tab toward the opening in the drywall.

Once secure:

Use a manual or power DRIVER to insert the screws provided to lock the mounting bracket in place.

Do not overtighten

Step 4:

Load the single gang keystone wall plate with the desired voice, data or video keystone module and terminate or insert the corresponding cables.

Then install the wall plate over the mounting bracket and insert the screws by hand.

Continue to tighten using a manual DRIVER until complete.

Do not overtighten.

TOOLS



COAX CABLE PREP TOOL

Adjustable strip tool for RG59 and RG6 coaxial cable.

Part #: **MST-332**

Colours: Grey

Unit of Measure: EA



TELECOM PREP TOOL

Cut and strip tool for flat ribbon cable.

Part #: **MST-502**

Colours: Yellow

Unit of Measure: EA



DATACOM MOD PLUG CRIMP TOOL

Used to crimp all TSOC mod plugs, 6P4C, 6P6C & 8P8C. Has built in wire cutter & stripper for flat ribbon cable.

Part #: **CT-3368**

Colours: Black

Unit of Measure: EA



RATCHET CABLE CRIMPING TOOL

This is TSOC's Ratchet Crimp Tool for Cat5E and Cat6 EZ RJ45 mod plugs.

Part #: **CT-200R-EZ**

Colours: Blue/Black

Unit of Measure: EA



D-SUB CRIMP TOOL

Used to crimp the male pins and female sockets used with TSOC D-sub connectors.

Part #: **CT-DSUB2**

Colours: Red

Unit of Measure: EA



RAPID JACK TOOL

Reduce installation time by terminating all 4 pair cable at once with the Rapid Jack Tool.

Part #: **CT-RJ314-8**

Colours: Black

Unit of Measure: EA



INSERT/EXTRACTION TOOL

Heavy Duty RS232 Insertion and removal tools for crimp type D-Sub connectors.

Part #: **TM-IETOOL2**

Colours: Red/Black

Unit of Measure: EA



D-SUB INSERT/EXTRACTION TOOL

This is TSOC's B connector crimp tool for use with the TM-BC series.

Part #: **CT-303**

Colours: Black

Unit of Measure: EA

PRODUCTS



KEYSTONE TERMINATION PUCK – 110 TYPE

This Keystone Termination Puck is designed to securely hold any TSOC Voice or Data 110-Type keystone module during termination.

Part #: **TM314-BASEBK2**

Colours: Black

Unit of Measure: EA



CONTINUOUS HOOK AND LOOP CABLE

Bundle and secure cables using Velcro cable ties available in 75 ft continuous roll.

Part #: **TV-1275BK** (1/2")

Part #: **TV-3475BK** (3/4")

Part #: **TV-175BK** (1")

Colours: Black

Unit of Measure: EA



VELCRO CABLE TIES

Bundle and secure cables using Velcro cable ties available in several colours and 3 standard lengths.

Part #: **TV-8**** (8")

Part #: **TV-12**** (12")

Part #: **TV-18**** (18")

Colours: Please Enquire Unit of Measure: 10/PKG



UTP SOLID RISER CABLE

This CMR rated 24AWG solid unshielded CAT 5E cable is designed for horizontal cabling installation and is available in (305m/1000FT) box.

Part #: **FT4-4PC5E**SL2**

Colours: Please Enquire

Unit of Measure: EA



UTP SOLID PLENUMCABLE

This CMP rated 24AWG solid unshielded CAT 5E cable is designed for horizontal cabling installation and is available in (305m/1000FT) box.

Part #: **FT6-4PC5E**SL2**

Colours: Please Enquire

Unit of Measure: EA



UTP STRANDED CABLE

This CM rated 24AWG stranded unshielded CAT 5E & CAT 6 cable is designed for patch cable production and is available in (305m/1000FT) box.

Part #: **TGS-8CRC5E****

Part #: **TGS-8CRC6****

Colours: Please Enquire

Unit of Measure: EA



STP STRANDED CABLE

This CM rated 24AWG stranded shielded CAT 5E & CAT 6 cable is designed for patch cable production and is available in (305m/1000FT) box.

Part #: **TGS-8CRC5ESH****

Part #: **TGS-8CRC6SH****

Colours: Please Enquire

Unit of Measure: EA



MOLDED PATCH CABLES

This stranded UTP CAT 5E/CAT 6 rated patch cable assembly is equipped with RJ45 connectors and snagless boots.

CAT5E

Part #: **LML8-***MMC5E****

Part #: **LML8-***MMC5EXRD** (CROSSOVER CABLE)
CAT6

Part #: **LML8-***MMC6****

Part #: **LML8-***MMC6XRD** (CROSSOVER CABLE)

Colours: Please Enquire

Unit of Measure: EA

Lengths: Please Enquire



HIGH DENSITY CAT 5E PATCH CABLES

This stranded UTP CAT 5E/CAT 6 rated patch cable assembly is equipped with unique snagless RJ45 connectors and strain relief.

CAT5E

Part #: **ML8-***MMC5E****

Part #: **ML8-***MMC5EXRD** (CROSSOVER CABLE)
CAT6

Part #: **ML8-***MMC6****

Part #: **ML8-***MMC6XRD** (CROSSOVER CABLE)

Colours: Please Enquire

Unit of Measure: EA

Lengths: Please Enquire



LOCKING PATCH CABLE

This stranded UTP CAT 5E/CAT 6 rated patch cable assembly is equipped with RJ45 connectors and locking sleeves.

Part #: **ML8-***MMC5E**-LK2** (CAT5E)

Part #: **ML8-***MMC6**-LK2** (CAT6)

Colours: Please Enquire

Unit of Measure: EA

Lengths: Please Enquire



RJ45 PORT LOCK

This RJ45 Port Lock is designed to block any Ethernet port using a Hex or T10 Torx key.

Part #: **MJ-RJ45LKBK**

Part #: **MJ-RJ45LKGY**

Colours: Black/Grey

Unit of Measure: EA



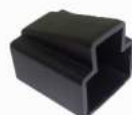
RJ45 LOCKING SLEEVE

Locking device for TSOC #MP-8P8C mod plug.

Part #: **MP-RJ45LKBK**

Colours: Black

Unit of Measure: EA



RJ45 PLUG PROTECTOR

This RJ45 Modular Plug Protector can be used to protect any Ethernet Patch Cable.

Part #: **MP-RJ45CVBK**

Colours: Black

Unit of Measure: 10/PKG



RJ45 PORT PROTECTOR

This RJ45 Port Protector can be used to protect any Ethernet Outlet.

Part #: **MJ-RJ45CVBK**

Colours: Black

Unit of Measure: 10/PKG



RJ45 PLUG LOCK

This RJ45 Modular Plug Lock is designed to prevent tampering or disconnection of any Ethernet connection.

Part #: **ML-RJ45LK**

Colours: Blue

Unit of Measure: 10/PKG



MODULAR PLUGS

This is a RJ45 Male crimp connector for 24-28 AWG solid and stranded cable.

STRANDED

Part #: **MP-8P8C**

(50/PKG)

Part #: **MP-8P8CK** (KEYED)

(50/PKG)

Part #: **MP-10P10C**

(10/PKG)

SOLID

Part #: **MP-8P8CS**

(50/PKG)

Part #: **MP-8P8C6S** (CAT 6)

(50/PKG)

Part #: **MP-8P8C6S2** (CAT 6)

(50/PKG)

Part #: **MP-10P10CS**

(10/PKG)

Colours: Clear

Unit of Measure: PKG



SNAGLESS MODULAR PLUGS

This is a snagless RJ45 Male crimp connector for 24-28 AWG solid and stranded cable.

STRANDED

Part #: **MP-8P8CSN**

(50/PKG)

Part #: **MP-8P8C6SN2** (CAT 6)

(50/PKG)

SOLID

Part #: **MP-8P8CSSN**

(50/PKG)

Part #: **MP-8P8C6SSN2** (CAT 6)

(50/PKG)

Part #: **MP-8P8CS-EZ**

(50/PKG)

Part #: **MP-8P8C6S-EZ**

(50/PKG)

Colours: Clear

Unit of Measure: PKG



SHIELDED MODULAR PLUGS

This is a shielded RJ45 Male crimp connector for 24-28 AWG solid and stranded cable.

Part #: **MP-8P8CSH**

(10/PKG)

Part #: **MP-8P8CSSH**

(10/PKG)

Colours: Clear

Unit of Measure: PKG



IP-67 RATED MODULAR PLUG

RJ-45 field termination male crimp connector kit for 24-28AWG solid cable for Industrial Ethernet applications

Part #: **MP-RJ45IPKBK**

Colours: Black

Unit of Measure: EA



IP Networking Solutions

PRODUCTS



8P8C HARMONICA

This adapter equipped with a Velcro strap converts a 25 pair trunk cable into six 8P8C modular jacks.

Part #: **HAR-0688FGY** (FEMALE)
Part #: **HAR-0688MGY** (MALE)
Colours: Grey Unit of Measure: EA



6P6C HARMONICA

This adapter equipped with a Velcro strap converts a 25 pair trunk cable into eight 6P6C modular jacks.

Part #: **HAR-0866FGY** (FEMALE)
Part #: **HAR-0866MGY** (MALE)
Colours: Grey Unit of Measure: EA



6P4C/8P4C HARMONICA

This adapter equipped with a Velcro strap converts a 25 pair trunk cable into twelve 6P4C or 8P4C modular jacks.

Part #: **HAR-1264FGY** (FEMALE)
Part #: **HAR-1284SFGY** (FEMALE)
Part #: **HAR-1264MGY** (MALE)
Part #: **HAR-1284SMGY** (MALE)
Colours: Grey Unit of Measure: EA



SNAGLESS BOOT

The boot is installed during cable assembly and will protect the #MP-8P8C mod plug connector tab.

Part #: **TMRBU2**** (One Piece)
Part #: **TMRBU3**** (Two Piece)
Colours: Enquire Unit of Measure: 25/PKG



STRAIN RELIEF

The one piece strain relief is installed during cable assembly and will prevent maximum bend at the cable entry point.

Part #: **TMRBU1CL**
Colours: Clear Unit of Measure: 25/PKG



SMALL HOME NETWORK ENCLOSURE

This cabinet will accept any TSOC distribution module and is equipped with a locking door.

Part #: **TMHNC-01BK**
Dimensions: 10.24"H x 6.69"W x 3.35"D
Colours: Black Unit of Measure: EA



LARGE HOME NETWORK ENCLOSURE

This cabinet will accept any TSOC distribution module and is equipped with a locking door.

Part #: **TMHNC-02BK**
Dimensions: 18.9"H x 14.49"W x 4.33"D
Colours: Black Unit of Measure: EA



PHONE & VIDEO DISTRIBUTION MODULE

This combination telephone and video distribution module with power supply is equipped with an RJ31X port for alarm.

Part #: **TMHNS-COMBK**
Colours: Black Unit of Measure: EA



TELEPHONE DISTRIBUTION MODULE

This voice distribution module allows connection between 6 locations and is equipped with an RJ31X port for alarm.

Part #: **TMHNS-TELBK**
Colours: Black Unit of Measure: EA



DATA DISTRIBUTION MODULE

This data distribution module allows CAT5e connection to 8 locations.

Part #: **TMHNS-DATBK**
Colours: Black Unit of Measure: EA



VIDEO DISTRIBUTION MODULE

This video distribution module combines 2 incoming 1GHZ signals to allow connection between 6 locations and is equipped with a power supply.

Part #: **TMHNS-VIDBK**
Colours: Black Unit of Measure: EA



AUDIO DISTRIBUTION MODULE

This audio distribution module allows 2 incoming channel to connect with 8 outputs with the use of an impedance matching volume control device.

Part #: **TMHNS-AUDBK**
Colours: Black Unit of Measure: EA



POWER DISTRIBUTION MODULE

This duplex power receptacle module provides 2 electrical NEMA 5-15R outlets.

Part #: **TMHNS-PWRBK**
Colours: Black Unit of Measure: EA



UNIVERSAL MOUNTING PLATE

This universal mounting plate allows installation of splitter, hub or router.

Part #: **TMHNS-BLNBK**

Colours: Black

Unit of Measure: EA



KEYSTONE MINI PATCH PANEL

This convenient wall mountable mini patch panel is equipped with either a single or dual hinged door and accepts all TSOC keystone modules for any combination.

Part #: **TMPP-HD12BG** (7"W x 3.25"H x 2.50"D)

Part #: **TMPP-HD24BG** (7"W x 6.50"H x 2.50"D)

Colours: Beige

Unit of Measure: EA



12 PORT MINI PATCH PANEL W/ BRACKET

This CAT 5E or CAT 6 rated mini patch panel is designed with 110 termination and is equipped with a wall mount bracket.

Part #: **TMPP-12S8C5EBK** (CAT 5E)

Part #: **TMPP-12S8C6BK** (CAT 6)

Colours: Black

Unit of Measure: EA



HINGED WALL MOUNT BRACKETS

This hinged wall mount bracket is designed to mount any standard 19" patch panel.

Part #: **TMWB-02BK** (3.50" H x 5.0" D x 19" W)

Part #: **TMWB-04BK** (7.00" H x 5.0" D x 19" W)

Part #: **TMWB-04DBK** (7.00" H x 7.0" D x 19" W)

Colours: Black

Unit of Measure: EA

RACK MOUNT PATCH PANEL

This patch panel is designed with 110 termination and will fit any standard 19" wall mount bracket, rack and cabinet.

CAT 5E

Part #: **TMPP-128C5EBK** (1U)

Part #: **TMPP-248C5EBK** (1U)

Part #: **TMPP-488C5EBK** (2U)

CAT 6

Part #: **TMPP-128C6B** (1U)

Part #: **TMPP-248C6BK** (1U)

Part #: **TMPP-488C6BK** (2U)

Colours: Black

Unit of Measure: EA



ADJUSTABLE WALL MOUNT RACK

This hinged wall mount bracket with adjustable depth 9"-13.8" is designed to hold any standard 19" patch panel.

Part #: **TMWB-01BKA** (1U) **TMWB-02BKA** (2U)

Part #: **TMWB-04BKA** (4U) **TMWB-08BKA** (8U)

Colours: Black

Unit of Measure: EA

BLANK RACK MOUNT PANEL

This 19" rack mount panel accepts all TSOC keystone modules for any combination.

Part #: **TMPP-12BK** (1U)

Part #: **TMPP-16BK** (1U)

Part #: **TMPP-24BK** (2U)

Part #: **TMPP-32BK** (2U)

Part #: **TMPP-48BK** (3U)

Colours: Black

Unit of Measure: EA



CAT 6 DVO SURFACE OUTLET

This two piece DVO surface outlet is CAT 6 rated and equipped with 110 termination for quick installation.

Part #: **TM605-K18C6WH** (1 PORT)

Part #: **TM605-K28C6WH** (2 PORT)

Colours: White

Unit of Measure: EA



HIGH DENSITY RACK MOUNT PANEL

This keystone rack mount panel accepts all TSOC keystone modules for any combination.

Part #: **TMPP-16HDBK** (1U)

Part #: **TMPP-24HDBK** (1U)

Part #: **TMPP-48HDBK** (2U)

Colours: Black

Unit of Measure: EA



SINGLE SURFACE WEATHERPROOF OUTLET

This composite metal surface outlet is designed to accept any one keystone RJ45 module for installation in an outdoor environment.

Part #: **TM605ODM-8C5EGY** (CAT 5E)

Part #: **TM605ODM-8C6GY** (CAT 6)

Colours: Grey

Unit of Measure: EA



PATCH PANEL MOUNTING KIT

Install any TSOC 1U patch panel using this simple and effective wall mount bracket.

Part #: **TMPP-BKTBK**

Colours: Black

Unit of Measure: EA



SINGLE SURFACE WEATHERPROOF OUTLET

This composite metal flush outlet is designed to accept any one keystone RJ45 module for installation in an outdoor environment.

Part #: **TM602ODM-8C5ESV** (CAT 5E)

Part #: **TM602ODM-8C6SV** (CAT 6)

Colours: Grey

Unit of Measure: EA





IP Networking Solutions

PRODUCTS



KEYSTONE PLATE

This single/double gang plastic wall plate smooth finish will accept any TSOC keystone module.

Part #: **TM602-K1S**** **TM602-K2S****

Part #: **TM602-K3S**** **TM602-K4S****

Part #: **TM602-K6S**** **TM602-K8S****

Part #: **TM602-K12S****

Single Gang: 1, 2, 3, 4 and 6 ports.

Dual Gang: 8 and 12 ports.

Colours: White & Ivory Unit of Measure: EA



WALL PHONE KEYSTONE PLATE

This single gang plastic wall plate will accept all TSOC keystone modules to mount any Analogue, Digital or VOIP telephone.

Part #: **TM630-K1S**HK**

Colours: White & Ivory Unit of Measure: EA



DECORA STRAP

This Decora strap is designed to accept all TSOC keystone modules for any combination.

Part #: **TM602-K1L**** **TM602-K2L****

Part #: **TM602-K3L**** **TM602-K4L****

Part #: **TM602-K6L****

Colours: White & Ivory Unit of Measure: EA



COVER PLATE

This cover plate is designed to fit over any TSOC Decora strap.

Part#: **TM602-SL**** (Single Gang)

Part#: **TM602-DL**** (Dual Gang)

Colours: White & Ivory Unit of Measure: EA



STEEL KEYSTONE WALL PLATE

This stainless steel wall plate accepts all TSOC keystone modules.

Part #: **TM602-K1M**

TM602-K2M

Part #: **TM602-K3M**

TM602-K4M

Part #: **TM602-K6M**

Dual Gang: 6 ports.

Colours: Stainless Steel Unit of Measure: EA



XO COUPLER

This CAT 6 Rated in-line coupler is designed to connect two RJ45 cable assemblies in a XO wiring configuration.

Part #: **TM608-8C6XGN**

Colours: Green

Unit of Measure: EA



XO ADAPTER

This male to female adapter is designed to connect in between an RJ45 plug and receptacle to provide XO wiring configuration.

Part #: **TM608-950XOWH** (CAT 3)

Part #: **TM608-8C6MFXRD** (CAT 6)

Colours: Enquire

Unit of Measure: EA



COUPLER

This CAT 6 Rated in-line coupler is designed to connect two RJ45 cable assemblies and will fit any TSOC keystone outlet.

STANDARD

Part #: **TM608-8C6****

HIGH DENSITY

Part #: **TM608K-8C6HD**** (UTP)

Part #: **TM608K-8C6HDSH** (STP)

Colours: White & Black Unit of Measure: EA



KEYSTONE SURFACE BOX

This surface mount box will accept all TM313 & TM314 series TSOC keystone modules.

Part #: **TM605-K1**2** **TM605-K2**2**

Colours: White & Black

Unit of Measure: EA



KEYSTONE BEZEL SURFACE BOX

This surface mount box will accept any combination TSOC keystone bezel and module.

Part #: **TM605-K2B**** **TM605-K4B****

Part #: **TM605-K6B****

Colours: White & Black

Unit of Measure: EA



KEYSTONE BEZEL

This bezel accepts all TSOC keystone modules for any combination.

Part #: **TM314-BZ1**** **TM314-BZ2****

Part #: **TM314-BZBL****

Colours: White & Black

Unit of Measure: EA



RJ45 KEYSTONE MODULE

This data module will fit any TSOC keystone outlet.

TOOL LESS

Part #: **TM313-8C5E**** (CAT 5E)

Part #: **TM315-8C6**** (CAT 6)

Part #: **TM315-8C6A**** (CAT 6A 10G)

110 (PUNCH DOWN TOOL)

Part #: **TM314-8C5E**** (CAT 5E)

Part #: **TM314-8C6**** (CAT 6)

Part #: **TM314-8C6A**** (CAT 6A 10G)

Colours: White, Black & Blue Unit of Measure: EA



SHIELDED RJ45 KEYSTONE MODULE

This shielded data module is designed to minimize EMI/RFI and will fit any TSOC keystone outlet.

Part #: **TM314-8C5ESH** (90 DEG, 110)

Part #: **TM314-8C6ASH** (180 DEG, TOOL LESS)

Colours: Stainless Steel Unit of Measure: EA



BLANK KEYSTONE MODULE

This keystone module is used to fill unused ports in any TSOC keystone outlet.

Part #: **TM314-BLN**-EA**

Colours: White & Ivory Unit of Measure: EA



SVHS FEED-THROUGH KEYSTONE MODULE

This video module is designed to accept any cable assembly with 4 Pin Mini Din connectors and will fit any TSOC keystone outlet.

Part #: **TM314-MD****

Colours: White & Ivory Unit of Measure: EA



RCA FEED-THROUGH KEYSTONE MODULE

This video module is designed to accept any cable assembly with RCA connectors and will fit any keystone outlet.

Part #: **TM314-RCWH-**F**

Part #: **TM314-RCRD-**F**

Part #: **TM314-RCYL-**F**

Colours: White & Ivory Unit of Measure: EA

Insert Colours: White, Red, Yellow



RCA 110 KEYSTONE MODULE

This video module is designed to accept 24AWG UTP cable and connect with any cable assembly with RCA connectors and will fit any TSOC keystone outlet.

Part #: **TM314-RCWH-**10**

Part #: **TM314-RCRD-**10**

Part #: **TM314-RCYL-**10**

Colours: White & Ivory Unit of Measure: EA

Insert Colours: White, Red, Yellow



AUDIO KEYSTONE MODULE

This binding post module is designed to accept 14-26AWG speaker cable and will fit any TSOC keystone outlet.

Part #: **TM314-BPRD-****

Colours: White & Ivory

Insert Colours:

Part #: **TM314-BPBK-****

Unit of Measure: EA

Red, Black

VIDEO KEYSTONE MODULE

This video module is designed to accept any cable assembly with F connectors and will fit any TSOC keystone outlet.

Part #: **TM314-FWH**

Colours: White & Ivory

Unit of Measure: EA



RCA SOLDER KEYSTONE MODULE

This video module is designed to accept any 24-26AWG cable and connect with any cable assembly with RCA connectors will fit any TSOC keystone outlet.

Part #: **TM314-RCWH-***S**

Part #: **TM314-RCRD-***S**

Part #: **TM314-RCYL-***S**

Colours: White & Ivory

Insert Colours:

Unit of Measure: EA

White, Red, Yellow



RCA-F KEYSTONE MODULE

This video module is designed to convert any cable assembly with F connectors to an RCA connector and will fit any TSOC keystone outlet.

Part #: **TM314-FRCYL-WH**

Part #: **TM314-FRCBL-WH**

Part #: **TM314-FRCRD-WH**

Part #: **TM314-FRCGN-WH**

Part #: **TM314-FRCWH-WH**

Colours: White & Ivory

Insert Colours:

Unit of Measure: EA

Yellow, Blue, Red, Green, White



D-SUB CRIMP PINS

This crimp pin is designed to accept 19-22AWG cable & will fit any TSOC crimp d-sub connector.

Part #: **TM-70M**

Colours: N/A

Part #: **TM-70F**

Unit of Measure: 100/PKG



CRIMP CONNECTOR SHELL

This d-sub connector is designed to fit any TSOC hood kit.

Part #: **TM-7109M**

Part #: **TM-7115M**

Part #: **TM-7125M**

Colours: Black

Part #: **TM-7109F**

Part #: **TM-7115F**

Part #: **TM-7125F**

Unit of Measure: EA





IP Networking Solutions

PRODUCTS



CONNECTOR SHELL HOOD W/ HARDWARE

This two piece plastic hood kit is designed to accept any TSOC d-sub connector.

DB09 - 9 PIN

Part #: **TM-7209GY**

Part #: **TM-7309CR**

Part #: **TM-7409DM**

DB15 - 15 PIN

Part #: **TM-7215GY**

Part #: **TM-7315CR**

Part #: **TM-7415DM**

DB25 - 25 PIN

Part #: **TM-7225GY**

Part #: **TM-7325CR**

Part #: **TM-7425DM**

Colours: Grey

Unit of Measure: EA

Available in: Plastic, Metalized Plastic, Die Cast



GENDER CHANGERS SLIM LINE

This slim design d-sub adapter is used to change the gender of any port. Available in male & female.

DB09 - 9 PIN

Part #: **TMGC-09FFSL** **TMGC-09MMSL**

DB15 - 15 PIN - HIGH DENSITY

Part #: **TMGC-HD15FFSL** **TMGC-HD15MMSL**

DB25 - 25 PIN

Part #: **TMGC-25FFSL** **TMGC-25MMSL**

Colours: NA

Unit of Measure: EA



PORT SAVER SLIM LINE

This slim design d-sub adapter is used to minimize mechanical wear on any port.

DB09 - 9 PIN

Part #: **TMGC-09MFSL**

DB15 - 15 PIN - HIGH DENSITY

Part #: **TMGC-HD15MFSL**

DB25 - 25 PIN

Part #: **TMGC-25MFSL**

Colours: NA

Unit of Measure: EA



RS232 TO MODULAR JACK

This adapter converts d-sub connectors to a female 4, 6, 8 or 10 pin modular jack.

DB09 - 9 PIN RS232

Part #: **DB09-4MGY**

Part #: **DB09-6MGY**

Part #: **DB09-6MDECGY**

Part #: **DB09-8MGY**

Part #: **DB09-10MGY**

DB15 - 15 PIN RS232

Part #: **DB15-4MGY**

Part #: **DB15-6MGY**

Part #: **DB15-6MDECGY**

Part #: **DB15-8MGY**

Part #: **DB15-10MGY**

DB25 - 25 PIN RS232

Part #: **DB25-4MGY**

Part #: **DB25-6MGY**

Part #: **DB25-6MDECGY**

Part #: **DB25-8MGY**

Part #: **DB25-10MGY**

Colours: Grey

DB09-4FGY

DB09-6FGY

DB09-6FDECGY

DB09-8FGY

DB09-10FGY

DB15-4FGY

DB15-6FGY

DB15-6FDECGY

DB15-8FGY

DB15-10FGY

DB25-4FGY

DB25-6FGY

DB25-6FDECGY

DB25-8FGY

DB25-10FGY

Unit of Measure: EA



DB25/DB25 NULL MODEM ADAPTER

This 25 pin d-sub adapter is designed to connect two terminals directly using an RS232 serial cable assembly.

Part #: **TMGC-25MMNM** (MALE/MALE)

Part #: **TMGC-25MFNM** (MALE/FEMALE)

Part #: **TMGC-25FFNM** (FEMALE/FEMALE)

Colours: Grey

Unit of Measure: EA



C50 CENTRONICS GENDER CHANGER

This slim design 50 pin centronics adapter is used to change the gender of any port.

Part #: **TMGC-50MM** (MALE/MALE)

Part #: **TMGC-50FF** (FEMALE/FEMALE)

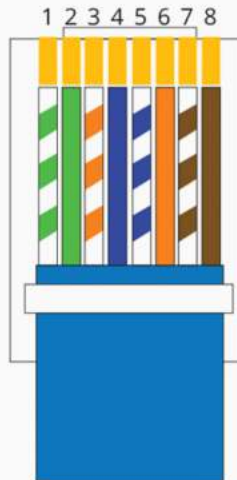
Colours: NA

Unit of Measure: EA

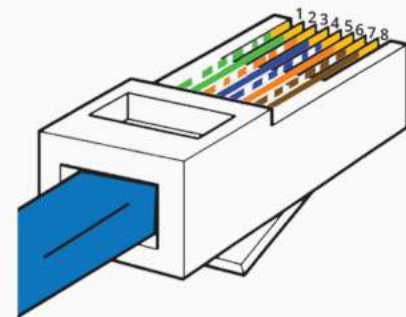
EIA/TIA T568A STANDARD

PIN	PAIR	WIRE	Color
1	3	1	white /green
2	3	2	green
3	2	1	white /orange
4	1	2	blue
5	1	1	white /blue
6	2	2	orange
7	4	1	white /brown
8	4	2	brown

CANADA WIRING STANDARD



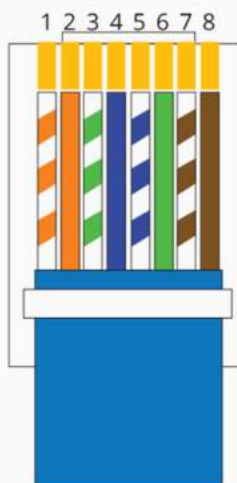
8P8C Wiring



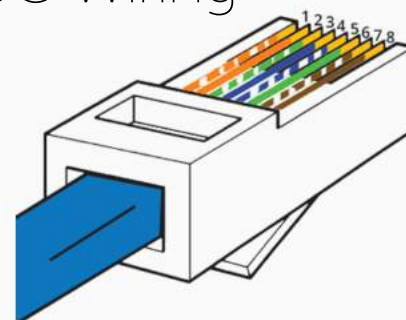
EIA/TIA T568B STANDARD

1	2	1	white /orange
2	2	2	orange
3	3	1	white /green
4	1	2	blue
5	1	1	white /blue
6	3	2	green
7	4	1	white /brown
8	4	2	brown

USA WIRING STANDARD



8P8C Wiring





A/V Networking Solutions

TOOLS



COAX CRIMP TOOL

This ratchet type tool is designed to terminate any TSOC F type crimp connector for coaxial cable.

Part #: **CT-RG59/6** (RG-59 & RG-6)
Colours: Red Unit of Measure: EA



COAX COMPRESSION TOOL

This ratchet type tool is designed to terminate any TSOC F type compression connector for coaxial cable.

Part #: **CT-RG59/6SS** (RG-59 & RG-6)
Part #: **CT-RG11SS** (RG11)
Colours: Red Unit of Measure: EA



ENHANCED COAX COMPRESSION TOOL

This ratchet type tool with changeable dies is designed to terminate any TSOC F, RCA and BNC type compression connector for coaxial cable.

Part #: **CT-RGSSA** (RG-59 & RG-6)
Colours: Red Unit of Measure: EA



ENHANCED COAX CABLE PREP TOOL

Adjustable cut and strip tool for RG-59, RG-6 and RG-11 coaxial cable.

Part #: **MST-RGA**
Colours: Blue Unit of Measure: EA



GILBERT LOCKING TOOL

This tool is designed for use with the NF-5762 Gilbert Theft Proof F type Terminator.

Part #: **PT-GTT4** (4") **PT-GTT7** (7")
Colours: Clear Unit of Measure: EA



VDV WIRE MAP

This platinum wire map cable tester is used for RJ11/RJ12/RJ45/FCON connections.

Part #: **TP119C**
Colours: Yellow Unit of Measure: EA



COMPRESSION KIT

This kit is complete with a compression tool, a cable prep tool, side cutters, (6) RG-6 F type connectors, (3) RG-6 BNC type connectors & (3) RG-6 RCA type connectors.

Part #: **CT-RGSSAK1**
Colours: Blue Unit of Measure: EA

PRODUCTS



SMOOTH FLUSH MOUNT JACK

This is a one piece plastic smooth finish mount wall plate with a F-81 feed through barrel.

1 PORT
Part #: **TM602-FSIV** Part #: **TM602-FSWH**
2 PORT
Part #: **TM612-FFSWH** Part #: **TM612-FFSIV**
Colours: White & Ivory Unit of Measure: EA



DECORA FLUSH MOUNT JACK

This is a one piece plastic Decora finish flush mount wall plate with a F-81 feed through barrel.

1 PORT
Part #: **TM602-FDIV** Part #: **TM602-FDWH**
2 PORT
Part #: **TM612-FFDWH** Part #: **TM612-FDSIV**
Colours: White & Ivory Unit of Measure: EA



STAINLESS STEEL FLUSH MOUNT PLATE

This is a one piece stainless steel flush mount wall plate with an opening for a F-81 feed through barrel.

1 PORT
Part #: **TM602-NFSM**
2 PORT
Part #: **TM612-NFFSM**
Colours: Stainless Steel Unit of Measure: EA



F-81/SCREW TERMINAL DECORA JACK

This is a one piece plastic Decora finish duplex flush mount wall plate with a F-81 feed through barrel and a 6 conductor screw terminal jack.

Part #: **TM612-6FDIV**
Part #: **TM612-6FDWH**
Colours: White & Ivory Unit of Measure: EA



2 PIECE DECORA JACK

This is a 2 piece smooth finish Decora strap with an F-81 barrel. Includes the cover plate.

SINGLE
Part #: **TM602-FLWH**
WITH 4 CONDUCTOR SCREW TERMINAL JACK
Part #: **TM602-4FLWH**
Colours: White Unit of Measure: EA



WEATHERPROOF OUTLET

This composite metal surface outlet is designed to accept any one keystone F module for installation in an outdoor environment.

Part #: **TM605ODM-F81GY**
Colours: Black Unit of Measure: EA



F-TYPE COMPRESSION CONNECTORS

This universal compression connector is designed for use with standard RG6 coaxial cable.

Part #: **TMRG-6CONSSU** (10)
 Part #: **TMRG-6CONSSU-50** (50)
 Colours: Red Unit of Measure: PKG



F-TYPE COMPRESSION CONNECTOR

This F type compression connector is suitable for quad shielded FT-4 rated RG6 coaxial cable.

Part #: **TMRG-6QFCONSS**
 Colours: Silver/ Blue Unit of Measure: 10/PKG



BNC-TYPE COMPRESSION CONNECTOR

This universal compression connector is designed for use with standard RG59 & RG6 coaxial cable. Colour coded ID rings included.

Part #: **TMRG-59BCONSS2** (RG59)
 Part #: **TMRG-6BCONSS** (RG6)
 Colours: Black Unit of Measure: EA



RCA-TYPE COMPRESSION CONNECTOR

This universal compression connector is designed for use with standard RG6 coaxial cable.

Part #: **TMRG-6RCONSS2**
 Colours: N/A Unit of Measure: EA



F-TYPE FEEDTHRU CONNECTOR

This coupler is designed to join an RG59 or RG6 coaxial cable assembly and includes hardware for mounting in any TSOC wall plate or patch panel.

Part #: **TMFC-BAR** (1GHz)
 Part #: **TMFC-BARL** (1GHz)
 Part #: **TMFC2-BARL** (2GHz)
 Colours: Silver Unit of Measure: 10/PKG



F-TYPE CRIMP CONNECTOR NON-PLENUM

This is a non-plenum F type crimp connector with 1/2" attached ferrule is suitable for FT-4 rated RG6 coaxial cable.

Part #: **TMRG-6CON**
 Part #: **TMRG-6CONWP** (Weather Proof)
 Colours: Silver Unit of Measure: 10/PKG



F-TYPE CRIMP CONNECTOR PLENUM

This F type crimp connector with 1/2" attached ferrule is suitable for FT-6 rated RG6 coaxial cable.

Part #: **TMRG-6CONPL**
 Colours: Silver Unit of Measure: 10/PKG



F-TYPE CRIMP CONNECTOR

This F type crimp connector with 1/2" attached ferrule is suitable for FT-4 rated RG59 coaxial cable.

Part #: **TMRG-59CON**
 Part #: **TMRG-59CONWP** (Weather Proof)
 Colours: Silver Unit of Measure: 10/PKG



TWIST TYPE CONNECTOR

This F type twist connector with 1/2" attached ferrule is suitable for FT-4 rated RG6 coaxial cable.

Part #: **TMRG-6CONTW**
 Colours: Silver Unit of Measure: 10/PKG



BNC TYPE TWIST CONNECTOR

This BNC type twist connector with 1/2" attached ferrule is suitable for FT-4 rated cable.

Part #: **TMRG-59BCONTW** (RG59)
 Part #: **TMRG-6BCONTW** (RG6)
 Colours: Silver Unit of Measure: EA



F CONNECTOR LOCKING TOOL

This tool is designed to install/remove the TMRG-SLK1 FConnector Lock.

Part #: **PT-SLK1**
 Colours: N/A Unit of Measure: EA



F CONNECTOR LOCK

This theft proof connector is designed to protect any RG59 or RG6 F type cable assembly from being removed.

Part #: **TMRG-SLK1**
 Colours: N/A Unit of Measure: EA



BLANK KEYSTONE MODULE

This keystone module is used to fill unused ports in any TSOC keystone outlet.

Part #: **TM314-BLNWH**
 Colours: White Unit of Measure: EA



AUDIO KEYSTONE MODULE

This binding post module is designed to accept 14-26AWG speaker cable and will fit any TSOC keystone outlet.

Part #: **TM314-BPRD-WH**
 Part #: **TM314-BPBK-WH**
 Part #: **TM314-BPRD-IV**
 Part #: **TM314-BPBK-IV**
 Colours: White & Ivory Unit of Measure: EA
 Insert Colours: Black & Red



A/V Networking Solutions

PRODUCTS



VIDEO KEYSTONE MODULE

This video module is designed to accept an RG59 or RG6 cable assembly with F connectors and will fit any TSOC keystone outlet.

Part #: **TM314-F****

Colours: White & Ivory

Unit of Measure: EA



RCA FEED-THROUGH KEYSTONE MODULE

This video module is designed to accept any cable assembly with RCA connectors and will fit any keystone outlet.

Part #: **TM314-RCYL-**F**

Part #: **TM314-RCRD-**F**

Part #: **TM314-RCWH-**F**

Colours: White & Ivory

Unit of Measure: EA

Insert Colours:

Yellow, Red & White



RCA SOLDER KEYSTONE MODULE

This video module is designed to accept any 24-26AWG cable and connect with any cable assembly with RCA connectors and will fit any TSOC keystone outlet.

Part #: **TM314-RCYL-**S**

Part #: **TM314-RCRD-**S**

Part #: **TM314-RCWH-**S**

Colours: White & Ivory

Unit of Measure: EA

Insert Colours:

Yellow, Red & White



RCA 110 KEYSTONE MODULE

This video module is designed to accept 24AWG UTP cable and connect with any cable assembly with RCA connectors and will fit any TSOC keystone outlet.

Part #: **TM314-RCYL-**10**

Part #: **TM314-RCRD-**10**

Part #: **TM314-RCWH-**10**

Colours: White & Ivory

Unit of Measure: EA

Insert Colours:

Yellow, Red & White



RCA-F KEYSTONE MODULE

This video module is designed to convert any RG59/RG6 cable assembly with an F connector to an RCA connector and will fit any TSOC keystone outlet.

Part #: **TM314-FRCBL-WH** **TM314-FRCGN-WH**

Part #: **TM314-FRCRD-WH** **TM314-FRCYL-WH**

Part #: **TM314-FRCWH-WH**

Colours: White

Unit of Measure: EA

Insert Colours: Blue, Green, Red, Yellow & White



SVHS FEED-THROUGH KEYSTONE MODULE

This video module is designed to accept any cable assembly with 4 Pin Mini Din connectors and will fit any TSOC keystone outlet.

Part #: **TM314-MD****

Colours: White & Ivory

Unit of Measure: EA



SPLITTER

This 2 GHZ splitter is suitable for installation with F type connectors.

Part #: **TMSPL2-2** (2 WAY) **TMSPL2-3** (3 WAY)

Part #: **TMSPL2-4** (4 WAY) **TMSPL2-6** (6 WAY)

Part #: **TMSPL2-8** (8 WAY)

Colours: Silver

Unit of Measure: EA



GROUNDING BLOCK

This 2 GHZ grounding block is weather resistant and suitable for installation with F type connectors.

Part #: **TMGRN2-1** (Single) **TMGRN2-2** (Double)

Colours: Chromate

Unit of Measure: EA



NYLON CABLE TIES

Bundle and secure cables using nylon cable ties.

Part #: **TF-4**** (4")

TF-8** (8")

Part #: **TF-8H**** (8" W/ HOLE)

Part #: **TF-11**** (11")

TF-14** (14")

Colours: Black or Natural Unit of Measure: 100/PKG



VELCRO CABLE TIES

Bundle and secure cables using Velcro cable ties available in various colours and 3 standard lengths.

Part #: **TV-8**** (8") **TV-12**** (12") **TV-18**** (18")

Colours: Please Enquire Unit of Measure: 10/PKG



SCREW TIE MOUNTS

This mount is installed to a surface with a standard screw and allows cable bundles to be secured using TSOC cable ties.

Part #: **FTH-13SIV** (1/2") **FTH-14SIV** (3/4")

Colours: Natural

Unit of Measure: 25/PKG



ADHESIVE TIE MOUNTS

This self adhesive mount is installed to a surface to allow cable bundles to be secured using TSOC cable ties.

Part #: **TFB-3AIV** (3/4")

TFB-5AIV (1")

Colours: Natural

Unit of Measure: 25/PKG



RG-6 COAXIAL CABLE

This 18AWG bare copper 60% braided shield FT-4 rated RG6 coaxial cable is recommended for CATV and Satellite installations. (305M/1000 FT) Box.

Part #: **FT4-RG6**2**

Colours: White & Black

Unit of Measure: EA

HDMI 1.4 CABLES

This shielded cable assembly is used to transmit uncompressed digital Audio and Video signal.

Part #: **HDMI-03MMBK-1.4** (3FT)

Part #: **HDMI-06MMBK-1.4** (6FT)

Part #: **HDMI-10MMBK-1.4** (10FT)

Part #: **HDMI-15MMBK-1.4** (15FT)

Part #: **HDMI-25MMBK-1.4** (25FT)

Part #: **HDMI-50MMBK-1.4** (50FT)

Part #: **HDMI-75MMBK-1.4** (75FT)

Part #: **HDMI-100MMBK-1.4** (100FT)

Colours: Black

Unit of Measure: EA

RCA COMPONENT CABLES

This colour coded molded 75-Ohm RG-59 shielded coaxial cable assembly with RCA connectors is used to transmit an analogue Audio and Video signal.

Part #: **TMDUB-03BK** (3FT)

Part #: **TMDUB-06BK** (6FT)

Part #: **TMDUB-12BK** (12FT)

Colours: Black

Unit of Measure: EA

CABLE CLIPS

Surface mount RG-59 or RG-6 cable using this plastic clip equipped with a 1/4" concrete nail.

Part #: **TMNC-02****

Colours: White & Black

Unit of Measure: 25/PKG

DATA BALUNS

This data balun is designed for a legacy TOKEN RING network application converting a BNC to RJ45 connection.

Part #: **BL-BNCM45F-45**

Colours: Black

Unit of Measure: EA

VIDEO BALUNS

This pair of video baluns are designed for a CCTV network application converting a BNC to RJ45 including an AC power connection.

Part #: **BL-BNCM45FV-PR**

Colours: Black Unit of Measure: 2/PKG



F CABLES

This F cable assembly is designed with coaxial cable and compression connectors for maximum performance and reliability.

Part #: **F6-03MMBK** (3FT)

Part #: **F6-06MMBK** (6FT)

Part #: **F6-12MMBK** (12FT)

Colours: Black

Unit of Measure: EA

Custom Lengths:

Please Enquire



RCA CABLES

This RCA cable assembly is designed with coaxial cable and compression connectors for maximum performance and reliability.

Part #: **RCA6-03MMBK** (3FT)

Part #: **RCA6-06MMBK** (6FT)

Part #: **RCA6-12MMBK** (12FT)

Colours: Black

Unit of Measure: EA

Custom Lengths:

Please Enquire



BNC CABLES

This BNC cable assembly is designed with coaxial cable and compression connectors for maximum performance and reliability.

Part #: **LBNC6-01MMBK** (1FT)

Part #: **LBNC6-03MMBK** (3FT)

Part #: **LBNC6-06MMBK** (6FT)

Part #: **LBNC6-12MMBK** (12FT)

Colours: Black

Unit of Measure: EA

Custom Lengths:

Please Enquire



VGA CABLES

This VGA cable assembly is designed with stranded wire and molded connectors with ferrites for maximum performance and reliability.

STANDARD

Part #: **HD15MHD15M03BK** (3FT)

Part #: **HD15MHD15M06BK** (6FT)

Part #: **HD15MHD15M10BK** (10FT)

Part #: **HD15MHD15M15BK** (15FT)

Part #: **HD15MHD15M25BK** (25FT)

Part #: **HD15MHD15M50BK** (50FT)

Part #: **HD15MHD15M75BK** (75FT)

Part #: **HD15MHD15M100BK** (100FT)

WITH AUDIO (STEREO MINI PLUG)

Part #: **HD15MHD15M03BK-ST** (3FT)

Part #: **HD15MHD15M06BK-ST** (6FT)

Part #: **HD15MHD15M10BK-ST** (10FT)

Part #: **HD15MHD15M15BK-ST** (15FT)

Part #: **HD15MHD15M25BK-ST** (25FT)

Part #: **HD15MHD15M50BK-ST** (50FT)

Part #: **HD15MHD15M75BK-ST** (75FT)

Part #: **HD15MHD15M100BK-ST** (100FT)

Colours: Black

Unit of Measure: EA

Custom Lengths:

Please Enquire





PRODUCTS



12 PORT WALL MOUNTABLE PANEL

This handy wall mountable single hinged panel accepts all TSOC keystone modules for any combination.

Part #: **TMPP-HD12BG**

Colours: Beige

Unit of Measure: EA

Dimensions:

7"W x 3.25"H x 2.50"D



24 PORT WALL MOUNTABLE PANEL

This handy wall mountable double hinged panel accepts all TSOC keystone modules for any combination.

Part #: **TMPP-HD24BG**

Colours: Beige

Unit of Measure: EA

Dimensions:

7"W x 6.50"H x 2.50"D



BLANK KEYSTONE RACK MOUNT PANEL

This 19" rack mount panel accepts all TSOC keystone modules for any combination.

Part #: **TMPP-12BK** (1U)

TMPP-16BK (1U)

Part #: **TMPP-24BK** (2U)

TMPP-32BK (2U)

Part #: **TMPP-48BK** (3U)

Colours: Black

Unit of Measure: EA



HINGED WALL MOUNT BRACKETS

This hinged wall mount bracket is designed to hold any standard 19" patch panel.

Part #: **TMWB-02BK** (3.50" H x 5.0" D x 19" W)

Part #: **TMWB-04BK** (7.00" H x 5.0" D x 19" W)

Part #: **TMWB-04DBK** (7.00" H x 7.0" D x 19" W)

Colours: Black

Unit of Measure: EA



HD KEYSTONE RACK MOUNT PANEL

This high density keystone rack mount panel accepts all TSOC keystone modules for any combination.

Part #: **TMPP-16HDBK** (1U)

Part #: **TMPP-24HDBK** (1U)

Part #: **TMPP-48HDBK** (2U)

Colours: Black

Unit of Measure: EA



ADJUSTABLE WALL MOUNT RACK—1U

This hinged wall mount bracket with adjustable depth 9"-13.8" is designed to hold any standard 19" patch panel.

Part #: **TMWB-01BKA**

TMWB-02BKA

Part #: **TMWB-04BKA**

TMWB-08BKA

Colours: Black

Unit of Measure: EA



RACK MOUNT PATCH PANEL

This patch panel is designed with 110 termination and will fit any standard 19" wall mount bracket, rack and cabinet.

CAT5E

Part #: **TMPP-128C5EBK** (1U)

Part #: **TMPP-248C5EBK** (1U)

Part #: **TMPP-488C5EBK** (2U)

CAT 6

Part #: **TMPP-128C6BK** (1U)

Part #: **TMPP-248C6BK** (1U)

Part #: **TMPP-488C6BK** (2U)

Colours: Black

Unit of Measure: EA

BNC PATCH PANELS

This patch panel is equipped with female to female 75OHM isolated BNC connectors and designed for distribution of Security Network Cabling.

Part #: **TMPP-16BNC-75L** (16 Port, 1U)

Part #: **TMPP-24BNC-75L** (24 Port, 1U)

Part #: **TMPP-32BNC-75L** (32 Port, 2U)

Part #: **TMPP-48BNC-75L** (48 Port, 2U)

Colours: Black

Unit of Measure: EA



RACK MOUNT SCREWS

These 10/32 rack mount screws are used to install cable management hardware on TSOC racks and wall mount brackets.

Part #: **TM-RKS**

Colours: Black

Unit of Measure: 4/PKG



IDC BUTT/TAP/SPLICE CONNECTOR

These insulation displacement connectors are sealant filled for moisture resistance and can accept various gauges of wire sizes.

Part #: **TMUY-01** **TMUB-01** **TMUR-01**

Colours: Various

Unit of Measure: 100/PKG



B-WIRE SPLICE CONNECTOR

These self-piercing splice connectors are designed to accept various gauges of wire and available in convenient package options.

Part #: **TMBC-01** (100)

Part #: **TMBC-01-400** (400)

Part #: **TMBC-01-1000** (1000)

Part #: **TMBC-02** (100)

Part #: **TMBC-02-400** (400)

Part #: **TMBC-02-1000** (1000)

Colours: White & Blue

Unit of Measure: PKG



**MULTIMODE 62.5
FIBRE PATCH CABLES**

SIMPLEX ST-ST

Part #: **TSS288M1** (1M)
Part #: **TSS288M3** (3M)
Part #: **TSS288M10** (10M)

SIMPLEX SC-SC

Part #: **TSS2YYM1** (1M)
Part #: **TSS2YYM3** (3M)
Part #: **TSS2YYM10** (10M)

SIMPLEX LC-LC

Part #: **TSY2LLM1** (1M)
Part #: **TSY2LLM3** (3M)
Part #: **TSY2LLM10** (10M)

DUPLEX ST-ST

Part #: **TSD288M1** (1M)
Part #: **TSD288M3** (3M)
Part #: **TSD288M10** (10M)

DUPLEX SC-SC

Part #: **TSD2YYM1** (1M)
Part #: **TSD2YYM3** (3M)
Part #: **TSD2YYM10** (10M)

DUPLEX LC-LC

Part #: **TSX2LLM1** (1M)
Part #: **TSX2LLM3** (3M)
Part #: **TSX2LLM10** (10M)

Colours: Orange

TSS288M2 (2M)
TSS288M5 (5M)

TSS2YYM2 (2M)
TSS2YYM5 (5M)

TSY2LLM2 (2M)
TSY2LLM5 (5M)

TSD288M2 (2M)
TSD288M5 (5M)

TSD2YYM2 (2M)
TSD2YYM5 (5M)

TSX2LLM2 (2M)
TSX2LLM5 (5M)

Unit of Measure: EA



**MULTIMODE 50u
FIBRE PATCH CABLES**

SIMPLEX ST-ST

Part #: **TSS188M1** (1M)
Part #: **TSS188M3** (3M)
Part #: **TSS188M10** (10M)

SIMPLEX SC-SC

Part #: **TSS1YYM1** (1M)
Part #: **TSS1YYM3** (3M)
Part #: **TSS1YYM10** (10M)

SIMPLEX LC-LC

Part #: **TSY1LLM1** (1M)
Part #: **TSY1LLM3** (3M)
Part #: **TSY1LLM10** (10M)

DUPLEX ST-ST

Part #: **TSD188M1** (1M)
Part #: **TSD188M3** (3M)
Part #: **TSD188M10** (10M)

DUPLEX SC-SC

Part #: **TSD1YYM1** (1M)
Part #: **TSD1YYM3** (3M)
Part #: **TSD1YYM10** (10M)

DUPLEX LC-LC

Part #: **TSX1LLM1** (1M)
Part #: **TSX1LLM3** (3M)
Part #: **TSX1LLM10** (10M)

Colours: Orange

TSS188M2 (2M)
TSS188M5 (5M)

TSS1YYM2 (2M)
TSS1YYM5 (5M)

TSY1LLM2 (2M)
TSY1LLM5 (5M)

TSD188M2 (2M)
TSD188M5 (5M)

TSD1YYM2 (2M)
TSD1YYM5 (5M)

TSX1LLM2 (2M)
TSX1LLM5 (5M)

Unit of Measure: EA



**HYBRID MULTIMODE 62.5
FIBRE PATCH CABLES**

SIMPLEX ST-SC

Part #: **TSS28YM1** (1M)
Part #: **TSS28YM3** (3M)
Part #: **TSS28YM10** (10M)

SIMPLEX SC-LC

Part #: **TSY2YLM1** (1M)
Part #: **TSY2YLM3** (3M)
Part #: **TSY2YLM10** (10M)

SIMPLEX ST-LC

Part #: **TSY28LM1** (1M)
Part #: **TSY28LM3** (3M)
Part #: **TSY28LM10** (10M)

DUPLEX ST-SC

Part #: **TSD28YM1** (1M)
Part #: **TSD28YM3** (3M)
Part #: **TSD28YM10** (10M)

DUPLEX SC-LC

Part #: **TSX2YLM1** (1M)
Part #: **TSX2YLM3** (3M)
Part #: **TSX2YLM10** (10M)

DUPLEX ST-LC

Part #: **TSX28LM1** (1M)
Part #: **TSX28LM3** (3M)
Part #: **TSX28LM10** (10M)

Colours: Orange

TSS28YM2 (2M)
TSS28YM5 (5M)

TSY2YLM2 (2M)
TSY2YLM5 (5M)

TSY28LM2 (2M)
TSY28LM5 (5M)

TSD28YM2 (2M)
TSD28YM5 (5M)

TSX2YLM2 (2M)
TSX2YLM5 (5M)

TSX28LM2 (2M)
TSX28LM5 (5M)

Unit of Measure: EA



**HYBRID MULTIMODE 50u
FIBRE PATCH CABLES**

SIMPLEX ST-SC

Part #: **TSS18YM1** (1M)
Part #: **TSS18YM3** (3M)
Part #: **TSS18YM10** (10M)

SIMPLEX SC-LC

Part #: **TSY1YLM1** (1M)
Part #: **TSY1YLM3** (3M)
Part #: **TSY1YLM10** (10M)

SIMPLEX ST-LC

Part #: **TSY18LM1** (1M)
Part #: **TSY18LM3** (3M)
Part #: **TSY18LM10** (10M)

DUPLEX ST-SC

Part #: **TSD18YM1** (1M)
Part #: **TSD18YM3** (3M)
Part #: **TSD18YM10** (10M)

DUPLEX SC-LC

Part #: **TSX1YLM1** (1M)
Part #: **TSX1YLM3** (3M)
Part #: **TSX1YLM10** (10M)

DUPLEX ST-LC

Part #: **TSX18LM1** (1M)
Part #: **TSX18LM3** (3M)
Part #: **TSX18LM10** (10M)

Colours: Orange

TSS18YM2 (2M)
TSS18YM5 (5M)

TSY1YLM2 (2M)
TSY1YLM5 (5M)

TSY18LM2 (2M)
TSY18LM5 (5M)

TSD18YM2 (2M)
TSD18YM5 (5M)

TSX1YLM2 (2M)
TSX1YLM5 (5M)

TSX18LM2 (2M)
TSX18LM5 (5M)

Unit of Measure: EA





A/V Networking Solutions

PRODUCTS



SINGLE MODE 9u FIBRE PATCH CABLES

SIMPLEX ST-ST

Part #: **TSY388S1** (1M) **TSY388S2** (2M)

Part #: **TSY388S3** (3M) **TSY388S5** (5M)

Part #: **TSY388S10** (10M)

SIMPLEX SC-SC

Part #: **TSY3YYS1** (1M) **TSY3YYS2** (2M)

Part #: **TSY3YYS3** (3M) **TSY3YYS5** (5M)

Part #: **TSY3YYS10** (10M)

SIMPLEX LC-LC

Part #: **TSY3LLS1** (1M) **TSY3LLS2** (2M)

Part #: **TSY3LLS3** (3M) **TSY3LLS5** (5M)

Part #: **TSY3LLS10** (10M)

SIMPLEX FC-FC

Part #: **TSY377S1** (1M) **TSY377S2** (2M)

Part #: **TSY377S3** (3M) **TSY377S5** (5M)

Part #: **TSY377S10** (10M)



DUPLEX ST-ST

Part #: **TSD388S1** (1M) **TSD388S2** (2M)

Part #: **TSD388S3** (3M) **TSD388S5** (5M)

Part #: **TSD388S10** (10M)

DUPLEX SC-SC

Part #: **TSD3YYS1** (1M) **TSD3YYS2** (2M)

Part #: **TSD3YYS3** (3M) **TSD3YYS5** (5M)

Part #: **TSD3YYS10** (10M)

DUPLEX LC-LC

Part #: **TSX3LLS1** (1M) **TSX3LLS2** (2M)

Part #: **TSX3LLS3** (3M) **TSX3LLS5** (5M)

Part #: **TSX3LLS10** (10M)

DUPLEX FC-FC

Part #: **TSD377S1** (1M) **TSD377S2** (2M)

Part #: **TSD377S3** (3M) **TSD377S5** (5M)

Part #: **TSD377S10** (10M)



Colours: Orange

Unit of Measure: EA

SINGLE MODE HYBRID 9u FIBRE PATCH CABLES

SIMPLEX ST-SC

Part #: **TSY38YS1** (1M) **TSY38YS2** (2M)

Part #: **TSY38YS3** (3M) **TSY38YS5** (5M)

Part #: **TSY38YS10** (10M)

SIMPLEX LC-SC

Part #: **TSY3LYS1** (1M) **TSY3LYS2** (2M)

Part #: **TSY3LYS3** (3M) **TSY3LYS5** (5M)

Part #: **TSY3LYS10** (10M)

DUPLEX ST-SC

Part #: **TSD38YS1** (1M) **TSD38YS2** (2M)

Part #: **TSD38YS3** (3M) **TSD38YS5** (5M)

Part #: **TSD38YS10** (10M)

DUPLEX LC-SC

Part #: **TSD3LYS1** (1M) **TSD3LYS2** (2M)

Part #: **TSD3LYS3** (3M) **TSD3LYS5** (5M)

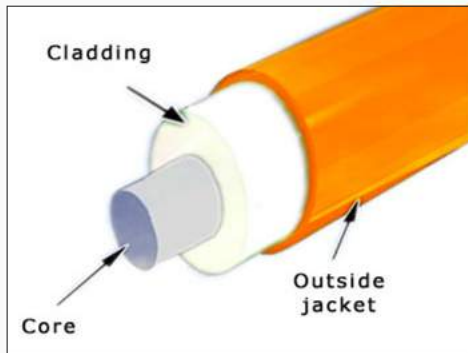
Part #: **TSD3LYS10** (10M)



Colours: Orange

Unit of Measure: EA

DID YOU KNOW HOW FIBER OPTIC CABLES WORK?



The traditional method of data transmission over copper cables is accomplished by transmitting electrons over a copper conductor. Fiber Optic cables transmit a digital signal via pulses of light through a strand of glass. The core is surrounded by a cladding which reflects the light back into the core and eliminates light from escaping the cable.

A fiber optic link works in the following manner. At the one end, the fiber cable is connected to a transmitter. The transmitter converts electronic pulses into light pulses and sends the optical signal through the fiber cable. At the other end, the fiber cable is plugged into a receiver which decodes the optical signal back into digital pulses.

Advantages

Increased bandwidth, extended cable run, light weight and EMI immunity.

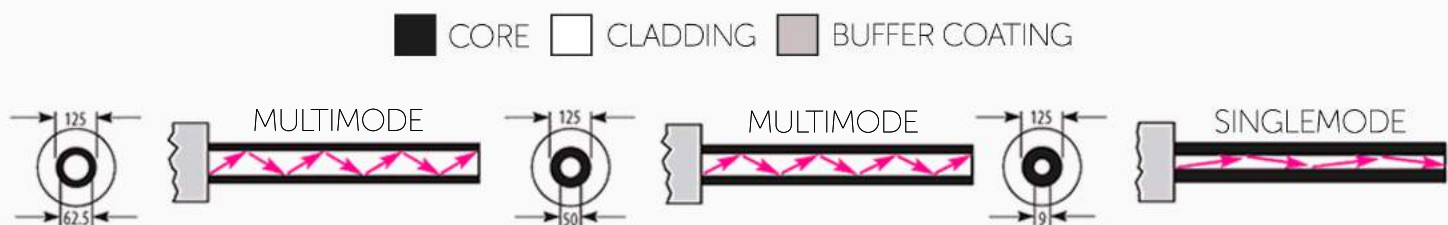
Recommended Cable Lengths

Singlemode: 5-6KM

Multimode: 1-2KM

MULTIMODE VS. SINGLEMODE FIBER

A "mode" in Fiber Optic cable refers to the path in which light travels. Multimode cables have a larger core diameter than that of singlemode cables. This larger core diameter allows multiple pathways and several wavelengths of light to be transmitted. Singlemode cables have a smaller core diameter and only allow a single wavelength and pathway for light to travel. Multimode fiber is commonly used in patch cable applications such as fiber to the desktop or patch panel to equipment. Multimode fiber is available in two sizes, 50 micron and 62.5 micron. Singlemode fiber is typically used in network connections over long lengths and is available in a core diameter of 9 microns (8.3 microns to be exact).



50 micron vs. 62.5 micron fiber

Both 50 micron and 62.5 micron fiber optic cables use an LED or laser light source. They are also used in the same networking applications. The main difference between the two is that 50 micron fiber can support 3 times the bandwidth of 62.5 micron fiber. 50 micron fiber also supports longer cable runs than 62.5 micron cable.

Simplex vs. Duplex Cable

Simplex cable consists of a single fiber optic strand. Data is transmitted in only a single direction, transmit to receive. Duplex cable consists of two fiber optic strands side-by-side. One strand goes from transmit to receive and the other strand connects receive to transmit. This allows bi-directional communication between devices.



BIX Networking Solutions

TOOLS



IMPACT TERMINATION TOOL

This impact termination tool is used for field installation of the BIX distribution connector. The tool is adjustable to allow for the cutting feature to be turned on/off.

Part #: **PTBX-16A-BL**

Colours: Beige

Unit of Measure: EA



QUICK TEST PROBE

This convenient single pair probe clips onto the 25 pair BIX distribution connector to ease in testing.

Part #: **PTBX-17A**

Colours: Red/Black

Unit of Measure: EA



REPLACEMENT 110 BLADE

Replacement 110 blade for PT-3140.

Part #: **PTB-110**

Colours: Black

Unit of Measure: EA



REPLACEMENT 66 BLADE

Replacement 66 blade for PT-3140.

Part #: **PTB-66**

Colours: Black

Unit of Measure: EA



REPLACEMENT BIX BLADE

Replacement BIX blade for PT-3140.

Part #: **PTB-BX**

Colours: Black

Unit of Measure: EA

BULK CABLE



CROSS CONNECT SPOOL

This is TSOC's 1 pair 1000ft cross connect spool.

Part #: **CC-1PRBLWH**

Part #: **CC-1PRBLYL**

Colours: BL/WH, BL/YL

Unit of Measure: RL

PRODUCTS



RACK MOUNTABLE DISTRIBUTION FRAME

This BIX Distribution Frame is designed to be mounted directly on a standard 19.0" relay rack and holds a combination of BIX connector or adapter.

Part #: **TMBX-4POSNRK-BK**

Colours: Black

Unit of Measure: EA



DESIGNATION LABELS

These self adhesive BIX labels are available in a variety of colours with clearly identified 4 pair and 5 pair markings.

Part #: **TMBX-DLxx-EA**

Colours: Inquire

Unit of Measure: EA



DESIGNATION STRIP

These designation strips snap fit between the BIX Distribution connector upon installation with all Mounts. The self adhesive Designation Labels are then applied to identify the cabling.

Part #: **TMBX-DSWH-EA**

Colours: White

Unit of Measure: EA



SERVICE GUARD

This is TSOC's BIX service guard that prevents tampering of BIX terminations.

Part #: **TMBX-SGRD**

Colours: Red

Unit of Measure: EA



25 PAIR DISTRIBUTION CONNECTOR

The BIX Distribution Connector allows 25 pairs of insulated wire 22-26AWG to be terminated in a cross connect or demarcation point.

Part #: **TMBX-1A**

5Pr Markings

Part #: **TMBX-1A4**

4Pr Markings

Part #: **TMBX-5A** (Multiplier)

5Pr Markings

Colours: Beige

Unit of Measure: EA



MODULAR DISTRIBUTION CONNECTORS

Designed to be used as a mini patch panel and be installed in any BIX distribution mount.

Part #: **TMBX-36B** (12 PORT)

Part #: **TMBX-36C** (8 PORT)

Part #: **TMBX-46DI** (6 PORT)

Colours: Beige

Unit of Measure: EA

6 PORT KEYSTONE ADAPTER

This 6 port BIX-type keystone adapter is designed to accept any TSOC brand keystone module and conveniently fits into the BIX cross connect system.

Part #: **TMBX-K6BK**

Part #: **TMBX-K6BL**

Colours: Black & Blue

Unit of Measure: EA

HIGH DENSITY KEYSTONE ADAPTER

This 6 port high density BIX-type keystone adapter is designed to accept any TSOC brand keystone module and conveniently fits into the BIX cross connect system.

Part #: **TMBX-K6HDBK**

Colours: Black

Unit of Measure: EA

50 PAIR DISTRIBUTION MOUNT

This frame accepts any BIX distribution connector and is used in small cross-connect installations.

Part #: **TMBX-2POSN**

Colours: Beige

Unit of Measure: EA

100 PAIR DISTRIBUTION MOUNT

This frame accepts any BIX distribution connector and is used in mid-size cross-connect installations.

Part #: **TMBX-4POSN**

Colours: Beige

Unit of Measure: EA

250 PAIR DISTRIBUTION MOUNT

This frame accepts any BIX distribution connector and is used in larger cross-connect installations.

Part #: **TMBX-10POSN**

Colours: Beige

Unit of Measure: EA

BIX TRUNK ACCESS BLOCK

This is TSOC's TMBX-1A to 25 pair female telco on TMBX-2POSN distribution mount bix block connector .

Part #: **TMBX-2POSN-1A25F**

Colours: Beige

Unit of Measure: EA

D-RING

This is TSOC's bix block type D distribution ring.

Part #: **TMBX-DRING**

Colours: Beige

Unit of Measure: EA



CONTACT US

Transglobal Systems of Canada Inc.
39-6635 Kitimat Road
Mississauga, ON L5N 6J2
Tel: 905 813 8762
Email: cust_serv@tsoc.com